



Campus  
FM  
Technology  
Association



THE OHIO STATE UNIVERSITY

---

# Your Perfect 3D World (BIM and GIS Integrated)

June 2015

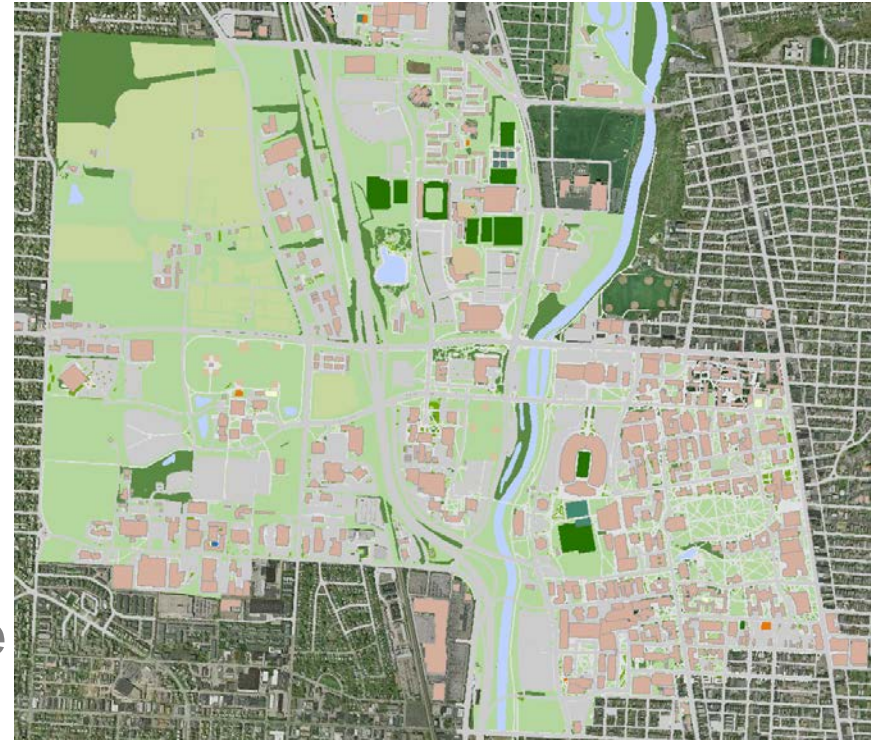
Larisa Kruger



# Background



- Larisa Kruger- Enterprise GIS Manager
- FITS- Facilities Information Technology Services
- 2 years (GIS for 15)
- 2 FTE, 4 students part time on GIS
- 5 FTE, 6 students on BIM / space data
- 1,350 buildings including regionals
- 34,350,000 GSF
- 1,660 Ac on Columbus campus.  
15,056 Ac total





# The Ohio State University Enterprise GIS Initiative

To promote, integrate, standardize and advance the utilization of geographic information systems (GIS) for administrative, management, and service-related purposes throughout The Ohio State University.





# Asset Management Improved Decision Making/Cost Savings

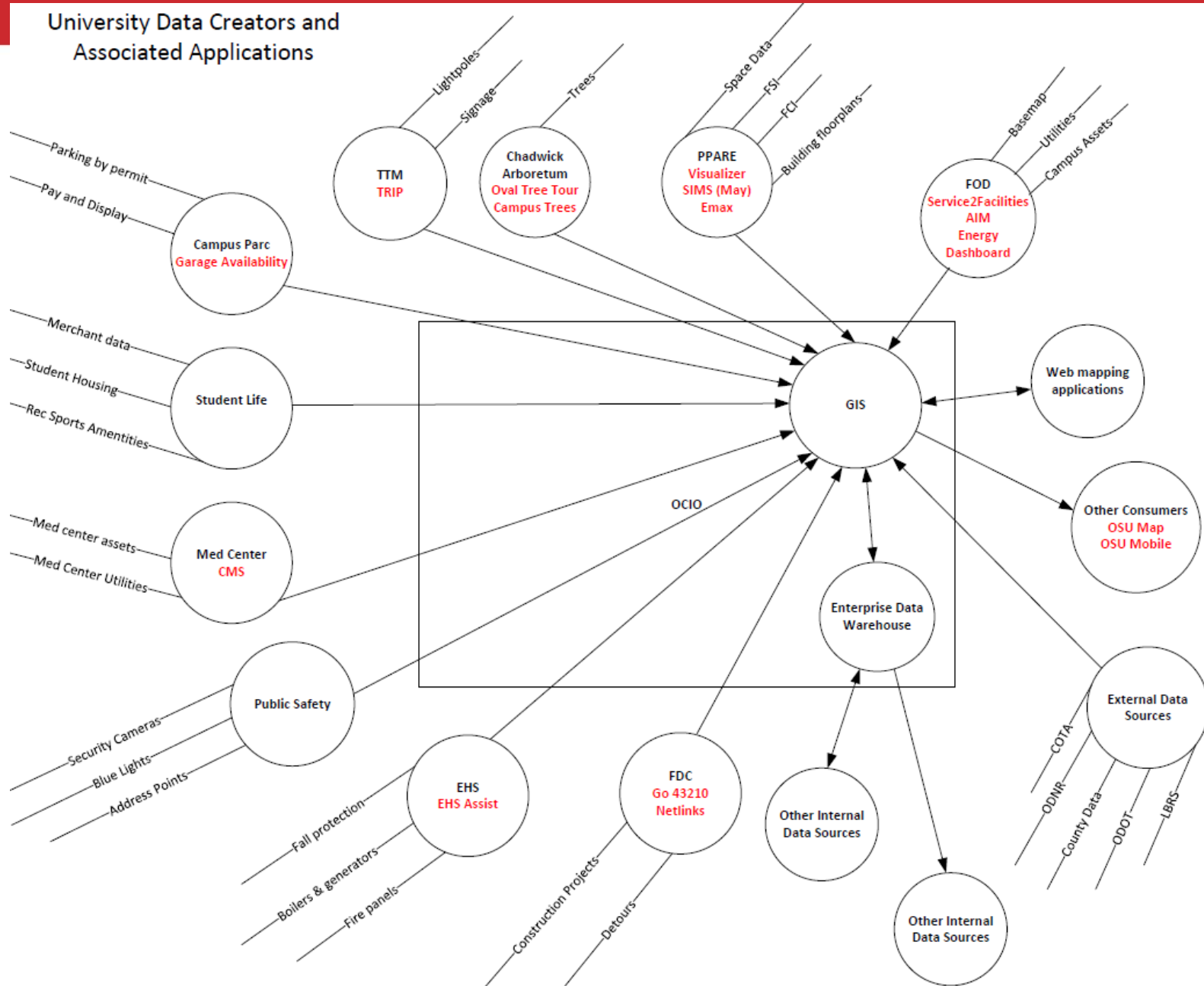


Link	BldgNumber	GISSTATUS	ComName		
<a href="http://www.osu.edu/map/lnk/buildings/287.jpg">http://www.osu.edu/map/lnk/buildings/287.jpg</a>	287	VERIFIED	Parking Garage - Neil Avenue (0287)		
<a href="http://www.osu.edu/map/lnk/buildings/067.jpg">http://www.osu.edu/map/lnk/buildings/067.jpg</a>	67	VERIFIED	Pomeroy Hall (0667)		
<a href="http://www.osu.edu/map/lnk/buildings/060.jpg">http://www.osu.edu/map/lnk/buildings/060.jpg</a>	60	VERIFIED	Olson Hall (0606)		
<a href="http://www.osu.edu/map/lnk/buildings/039.jpg">http://www.osu.edu/map/lnk/buildings/039.jpg</a>	39	VERIFIED	Hayes Hall (0039)		
<a href="http://www.osu.edu/map/lnk/buildings/066.jpg">http://www.osu.edu/map/lnk/buildings/066.jpg</a>	66	VERIFIED	Marshall Auditorium (0066)		
<a href="http://www.osu.edu/map/lnk/buildings/078.jpg">http://www.osu.edu/map/lnk/buildings/078.jpg</a>	78	VERIFIED	Maintenance Building (0078)		
<a href="http://www.osu.edu/map/lnk/buildings/056.jpg">http://www.osu.edu/map/lnk/buildings/056.jpg</a>	56	VERIFIED	Converse Hall (0056)		
<a href="http://www.osu.edu/map/lnk/buildings/064.jpg">http://www.osu.edu/map/lnk/buildings/064.jpg</a>	64	VERIFIED	Smith Laboratory (0064)		
<a href="http://www.osu.edu/map/lnk/buildings/090.jpg">http://www.osu.edu/map/lnk/buildings/090.jpg</a>	90	VERIFIED	Ramsayer Hall (0090)		
<a href="http://www.osu.edu/map/lnk/buildings/148.jpg">http://www.osu.edu/map/lnk/buildings/148.jpg</a>	148	VERIFIED	Scott Laboratory #148		
<a href="http://www.osu.edu/map/lnk/buildings/086.jpg">http://www.osu.edu/map/lnk/buildings/086.jpg</a>	86	VERIFIED	Hale Hall (0086)		
<a href="http://www.osu.edu/map/lnk/buildings/049.jpg">http://www.osu.edu/map/lnk/buildings/049.jpg</a>	49	VERIFIED	Drinks Hall (0049)		
<a href="http://www.osu.edu/map/lnk/buildings/296.jpg">http://www.osu.edu/map/lnk/buildings/296.jpg</a>	296	VERIFIED	Drake Performance and Event Center (0296)		
<a href="http://www.osu.edu/map/lnk/buildings/002.jpg">http://www.osu.edu/map/lnk/buildings/002.jpg</a>	82	VERIFIED	Ohio Stadium (0002)		
<a href="http://www.osu.edu/map/lnk/buildings/359.jpg">http://www.osu.edu/map/lnk/buildings/359.jpg</a>	359	VERIFIED	Parking Garage - Ninth Ave W (0359)		
<a href="http://www.osu.edu/map/lnk/buildings/379.jpg">http://www.osu.edu/map/lnk/buildings/379.jpg</a>	379	VERIFIED	Telecommunications Network Center (0379)		
<a href="http://www.osu.edu/map/lnk/buildings/047.jpg">http://www.osu.edu/map/lnk/buildings/047.jpg</a>	47	VERIFIED	Marshall Center (0047)	1501 Neil Ave	Columbus
<a href="http://www.osu.edu/map/lnk/buildings/044.jpg">http://www.osu.edu/map/lnk/buildings/044.jpg</a>	48	VERIFIED	Pennsylvania Place (0048)	1476 Pennsylvania Ave	Columbus
<a href="http://www.osu.edu/map/lnk/buildings/344.jpg">http://www.osu.edu/map/lnk/buildings/344.jpg</a>	348	VERIFIED	Jesse Owens Recreation Center South (0348)	175 W 11th Ave	Columbus
<a href="http://www.osu.edu/map/lnk/buildings/353.jpg">http://www.osu.edu/map/lnk/buildings/353.jpg</a>	302	VERIFIED	Parking Garage - Eleventh Ave (0302)	229 W 11th Ave	Columbus
<a href="http://www.osu.edu/map/lnk/buildings/046.jpg">http://www.osu.edu/map/lnk/buildings/046.jpg</a>	846	VERIFIED	William Hall Complex - Neil Building (0846)	1578 Neil Ave	Columbus
<a href="http://www.osu.edu/map/lnk/buildings/047.jpg">http://www.osu.edu/map/lnk/buildings/047.jpg</a>	847	VERIFIED	William Hall Complex - Scholars House West	239 W 10th Ave	Columbus
<a href="http://www.osu.edu/map/lnk/buildings/069.jpg">http://www.osu.edu/map/lnk/buildings/069.jpg</a>	860	VERIFIED	Pomeroy Alumnae Scholarship House (0669)	231 W 10th Ave	Columbus
<a href="http://www.osu.edu/map/lnk/buildings/064.jpg">http://www.osu.edu/map/lnk/buildings/064.jpg</a>	864	VERIFIED	Hardy Alumnae Scholarship House (0664)	226 W 10th Ave	Columbus
<a href="http://www.osu.edu/map/lnk/buildings/044.jpg">http://www.osu.edu/map/lnk/buildings/044.jpg</a>	848	VERIFIED	William Hall Complex - Scholars House East	221 W 10th Ave	Columbus
<a href="http://www.osu.edu/map/lnk/buildings/049.jpg">http://www.osu.edu/map/lnk/buildings/049.jpg</a>	849	VERIFIED	William Hall Complex - Worthington Building (E	203 W 10th Ave	Columbus
<a href="http://www.osu.edu/map/lnk/buildings/099.jpg">http://www.osu.edu/map/lnk/buildings/099.jpg</a>	89	VERIFIED	Sibert Hall (0099)	184 W 11th Ave	Columbus
<a href="http://www.osu.edu/map/lnk/buildings/103.jpg">http://www.osu.edu/map/lnk/buildings/103.jpg</a>	103	VERIFIED	Paterson Hall (0103)	191 W 12th Ave	Columbus
<a href="http://www.osu.edu/map/lnk/buildings/190.jpg">http://www.osu.edu/map/lnk/buildings/190.jpg</a>	190	VERIFIED	Monroe Tower (0190)	196 W 11th Ave	Columbus
<a href="http://www.osu.edu/map/lnk/buildings/044.jpg">http://www.osu.edu/map/lnk/buildings/044.jpg</a>	40	VERIFIED	Fachio Alumnae Scholarship House (0040)	220-222 W 11th Ave	Columbus
<a href="http://www.osu.edu/map/lnk/buildings/096.jpg">http://www.osu.edu/map/lnk/buildings/096.jpg</a>	96	VERIFIED	Cardinal Hall (0096)	236 W 11th Ave	Columbus
<a href="http://www.osu.edu/map/lnk/buildings/062.jpg">http://www.osu.edu/map/lnk/buildings/062.jpg</a>	902	VERIFIED	Eleventh Ave, 53 W (0902)	53 W 11th Ave	Columbus
<a href="http://www.osu.edu/map/lnk/buildings/064.jpg">http://www.osu.edu/map/lnk/buildings/064.jpg</a>	964	VERIFIED	Eleventh Ave, 45 W (0964)	45 W 11th Ave	Columbus
<a href="http://www.osu.edu/map/lnk/buildings/096.jpg">http://www.osu.edu/map/lnk/buildings/096.jpg</a>	292	VERIFIED	Galbraith Equine Center (0292)	688 Vinton Tharp St	Columbus
<a href="http://www.osu.edu/map/lnk/buildings/066.jpg">http://www.osu.edu/map/lnk/buildings/066.jpg</a>	66	VERIFIED	Plumb Hall (0066)	2027 Coffey Rd	Columbus
<a href="http://www.osu.edu/map/lnk/buildings/156.jpg">http://www.osu.edu/map/lnk/buildings/156.jpg</a>	156	VERIFIED	Animal Science Building (0156)	2029 Pyle Rd	Columbus
<a href="http://www.osu.edu/map/lnk/buildings/003.jpg">http://www.osu.edu/map/lnk/buildings/003.jpg</a>	3	VERIFIED	Agricultural Administration (0003)	2120 Pyle Rd	Columbus
<a href="http://www.osu.edu/map/lnk/buildings/299.jpg">http://www.osu.edu/map/lnk/buildings/299.jpg</a>	299	VERIFIED	Agricultural Engineering Building (0299)	550 Woody Hayes Dr	Columbus
<a href="http://www.osu.edu/map/lnk/buildings/284.jpg">http://www.osu.edu/map/lnk/buildings/284.jpg</a>	284	VERIFIED	Fawcett Center For Tomorrow (0284)	2400 Orientangy River Rd	Columbus
<a href="http://www.osu.edu/map/lnk/buildings/243.jpg">http://www.osu.edu/map/lnk/buildings/243.jpg</a>	243	VERIFIED	Ackerman Rd, 600	600 Ackerman Rd	Columbus
<a href="http://www.osu.edu/map/lnk/buildings/050.jpg">http://www.osu.edu/map/lnk/buildings/050.jpg</a>	300	VERIFIED	Library Book Depository (0300)	1700 Kenney Rd	Columbus





## University Data Creators and Associated Applications





## Summer/Fall 2013

- Campus-wide GIS Assessment
- Compile GIS Listserve
- Document Data Owners/Consumers and Wish-lists
- GIS Test Server Up and Running
- Developed OSU GIS Webpages

## Spring 2014

- Woolpert Scoping and Analysis
- Revit Model ETL's Developed
- Woolpert Web Application Development
- Student Basemap Clean-up

## Winter 2015

- OCIO builds out GIS System Architecture
- OCIO helps with GIS Maps 1.0 set-up
- Aerial Photos Flown for Regional Campuses and airport
- Utilities Migration Scoping

## Winter 2014

- Advisory Committee Developed
- ESRI Enterprise Advantage Program
- Basemap Ownership migrates to PARE
- CAD database and existing data migrated to LGIM

## Summer/Fall 2014

- Web Application build complete
- Students georeference CAD buildings
- Woolpert Systems Architecture Document complete
- Golf Course Basemap delivered

## Spring 2015

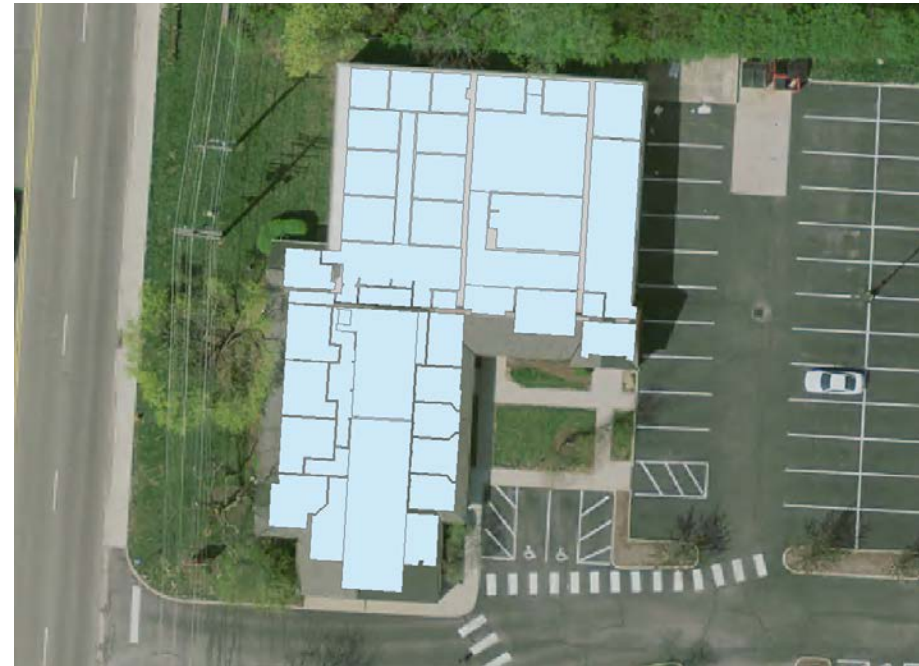
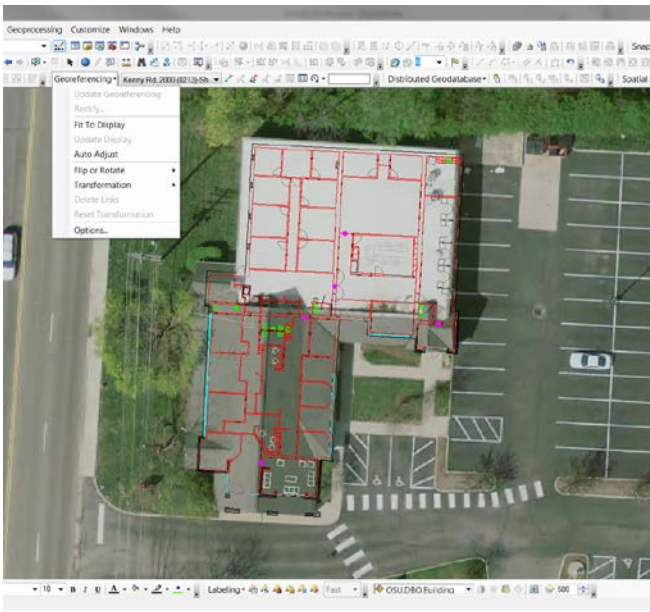
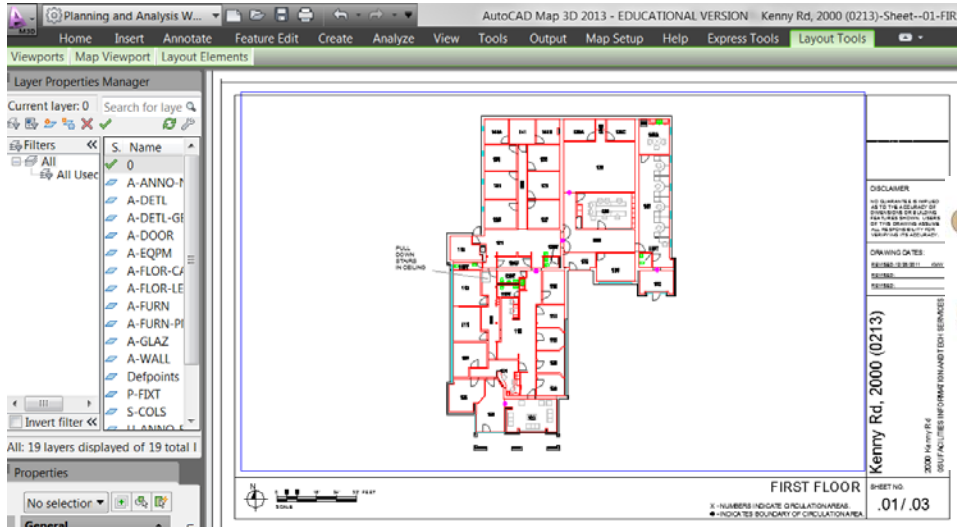
- Regional Imagery Delivered
- GIS Maps 1.0 soft roll out April 28
- Utilities Migration kicks-off
- Regional basemap begins development



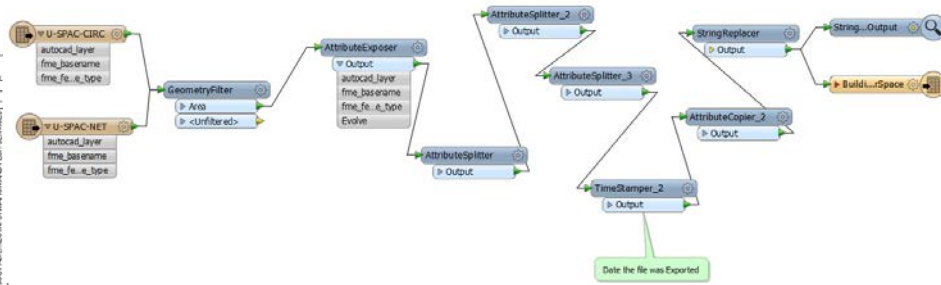
Basemap Migrated  
from:  
PARE's File  
Geodatabase, FOD  
Mapping CAD  
Smart Feature, FOD  
Mapping Oracle  
Spatial  
to  
**Local Government  
Information Model  
(LGIM) in SQL SDE**  
for use in desktop,  
web apps and  
ArcGIS Online







# CAD to GIS



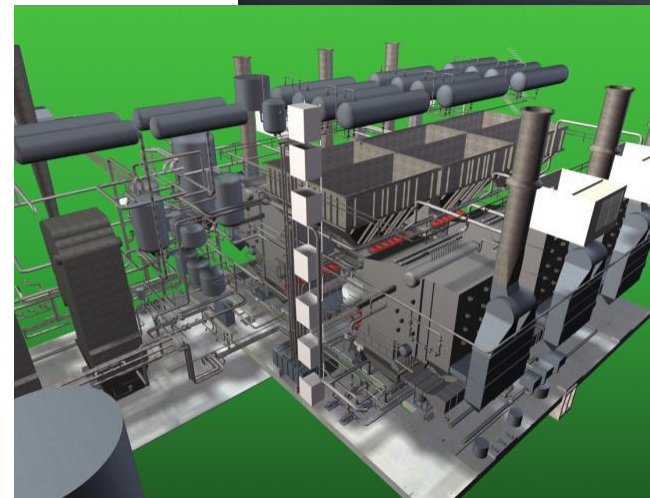


# BIM



## Building Information Modeling (BIM)

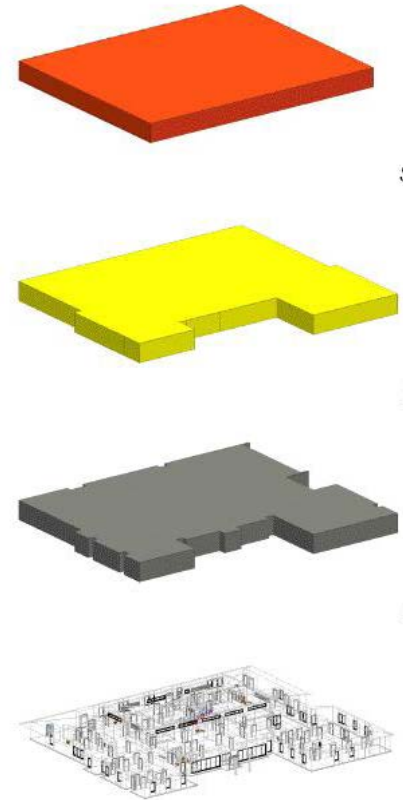
- Improved design process
- 3-D visualization for owner (static only)
- Coordination between disciplines
- Interference checking
- Facilitates energy efficiency and LEED
- Automated quantity take offs
- 4-D scheduling
- Improved documentation of design intent
- Potentially used for fabrication



## Benefits For Design And Construction



- **Conceptual Model (LOD1)**
  - Spaces, Volumes, approximate shapes
- **Approximate Geometry (LOD2)**
  - Generic elements, materials
  - Specific rooms/spaces
- **Precise Geometry (LOD3)**
  - Specific elements detailed
  - Interference checking
  - Suitable for Construction Documents
- **Fabrication (LOD4)**
  - Contractor/fabricator details
  - As-Built





# Buckeye BIM Initiative

BIM for Existing Buildings

BIM for Design & Construction





# Initiative Timeline

	2008	2009	2010	2011	2012	2013	2014	2015	2016
OSU began Considering BIM	█								
OSU & Consultants began Conversations		█							
Scope Definition			█						
Funding Approved				█					
Standards & Process Development				█	█	█	█	█	█
WMC Base Model Development				█	█	█	█	█	█
WMC Additional Model Development					█	█	█	█	█
BIM for Design & Construction Feasibility Study					█	█			
RPF for BIM Standards & Guideline Project						█			
University Base Model Development						█	█	█	█
BIM Standards & Guideline Project						█	█		
BIM Standards & Guideline Implementation							█	█	█



BIM for Existing Buildings



BIM for Design & Construction



Buckeye BIM Initiative Medical Center- complete Main Campus- In Progress Converted 15,525,022 sq ft Total 34,350,000 sq ft



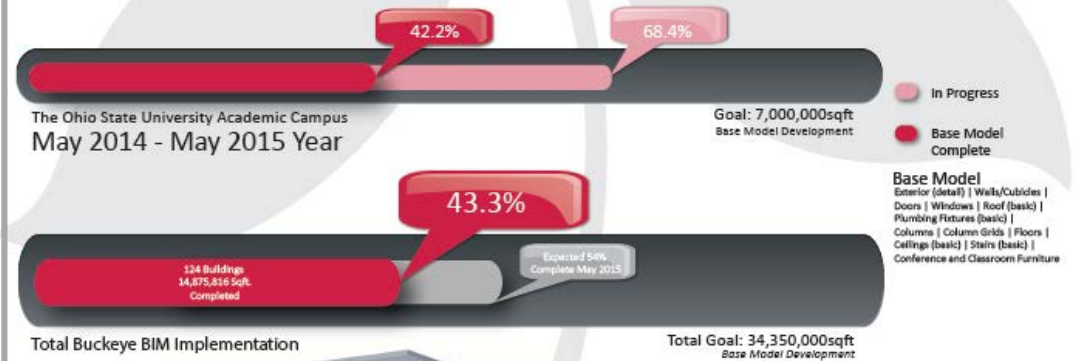
BIM for Design and Construction

Developing BIM standards and execution plans for the design and construction process.

- The BIM Project Delivery Standard and BIM Implementation Plan have been approved by senior leadership.
- The BIM Project Delivery Standard has been published to the FOD website for use by AEC firms.
- Phase 1 of the Implementation Plan which include, training, updates to the BDS, support for several pilot projects, and finalization of the process to rapidly push data into AiM from the models has begun.

BIM for Existing Buildings

Moving from Autocad based floorplans to Revit based building models.



Visit [http://bit.ly/OSU\\_Fits\\_Gallery](http://bit.ly/OSU_Fits_Gallery) to view more project renderings

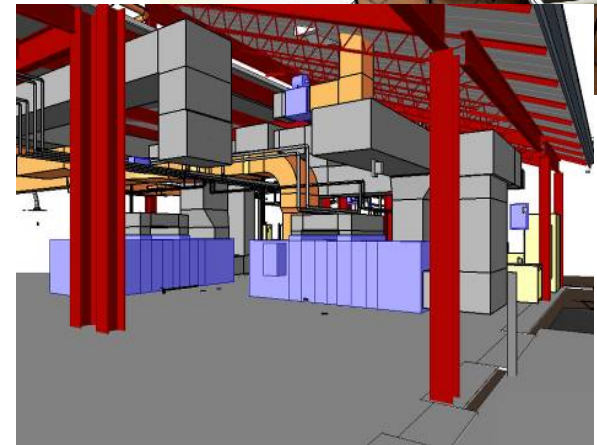






# BIM To GIS Integration Issues

- BIM is MUCH richer in detail than GIS
- GIS has only recently become fully 3-D
- Design BIM contains all the information needed to construct a building, but not to manage it
  - Space polygons
  - Occupant information
  - Asset details (make, model, etc.)
  - Equipment maintenance data
- Missing tabular data can be supplied by Construction Operations Building Information Exchange (COBie)



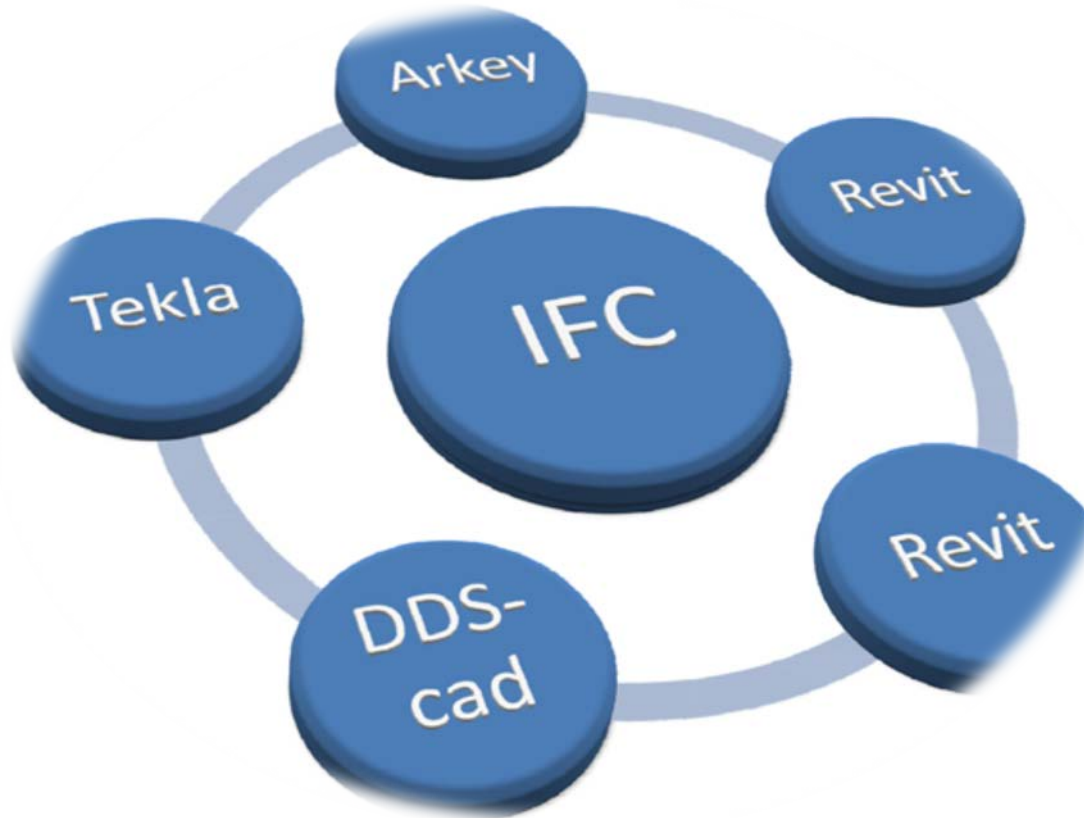


## **IFC- The international open standard for BIM**

*'Open' is the key to the real value of our buildingSMART standard. IFC can be used to exchange and share BIM data between applications developed by different software vendors without the software having to support numerous native formats. As an open format, IFC does not belong to a single software vendor; it is neutral and independent of a particular vendor's plans for software development.*



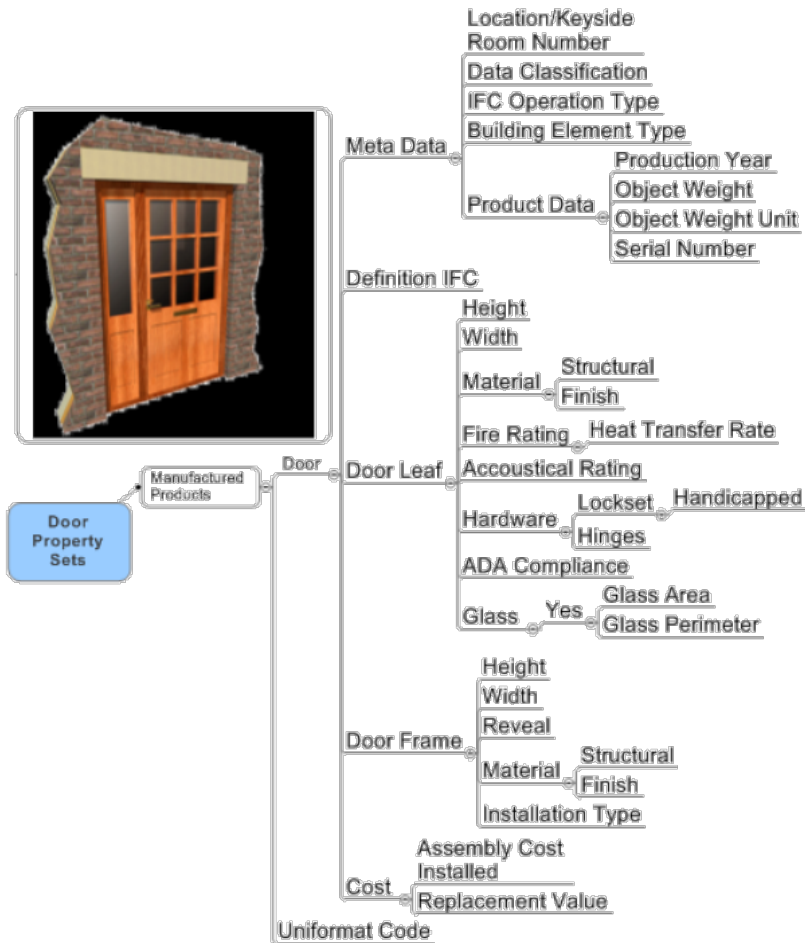
# IFC





# Elements in BIM are Created in Detail

This data is required to convey the information needed to construct the facility.





# 3D Formats

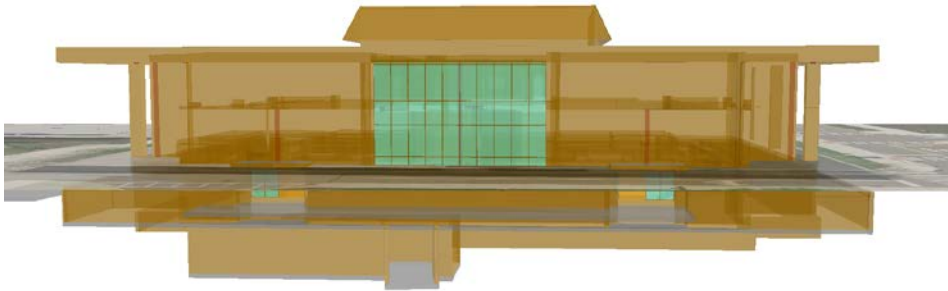
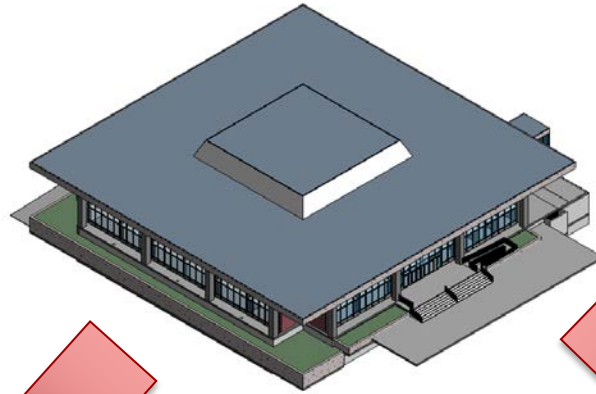
Format	Benefits	Limitations
COLLADA	<ul style="list-style-type: none"><li>• Support advanced material handling, asset instancing, and multiple UV sets.</li><li>• Static Model Import</li><li>• Shape Import</li><li>• Open to several software packages</li></ul>	<ul style="list-style-type: none"><li>• Machine resource heavy</li><li>• Light size file</li></ul>
CityGML	<ul style="list-style-type: none"><li>• OGC compliance</li><li>• Not Software driven</li><li>• Scalable modeling ( Exterior and interior)</li><li>• Indoor Modeling (routing)</li></ul>	<ul style="list-style-type: none"><li>• Not a straight forward import</li><li>• Light size file</li></ul>
3DS		<ul style="list-style-type: none"><li>• Old format (not very efficient)</li></ul>
OBJ	<ul style="list-style-type: none"><li>• Static Model Import</li><li>• Shape Import</li></ul>	<ul style="list-style-type: none"><li>• No indoor Modeling (routing)</li><li>• No texture</li></ul>
KML	<ul style="list-style-type: none"><li>• Static Model Import</li><li>• Shape Import</li></ul>	<ul style="list-style-type: none"><li>• No indoor Modeling (routing)</li></ul>
Shape/Goedatabase <sup>†</sup>	<ul style="list-style-type: none"><li>• Static Model Import</li><li>• Shape Import</li><li>• "Native to the Software"</li></ul>	<ul style="list-style-type: none"><li>• No indoor Modeling (routing)</li><li>• No texture</li></ul>
Autodesk <sup>®</sup> FBX <sup>®</sup>	<ul style="list-style-type: none"><li>• support advanced material handling, asset instancing, and multiple UV sets</li></ul>	<ul style="list-style-type: none"><li>• Some minimal Indoor modeling.</li><li>• Machine resource heavy</li><li>• Movie driven</li><li>• Not supported by FME</li></ul>
OSM	<ul style="list-style-type: none"><li>• Free source of data for the base data (2D only)</li></ul>	<ul style="list-style-type: none"><li>• Not a 3D dataset</li></ul>

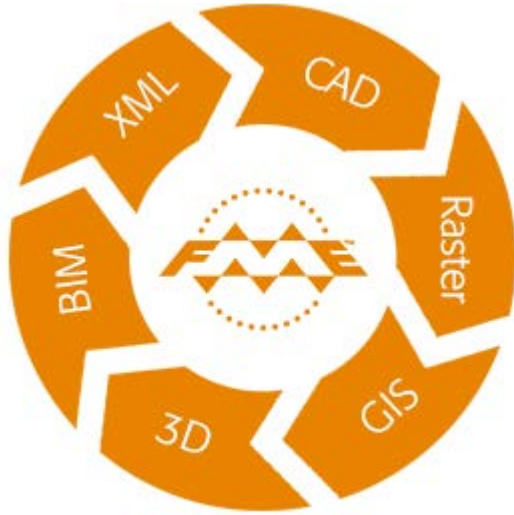


# BIM to GIS

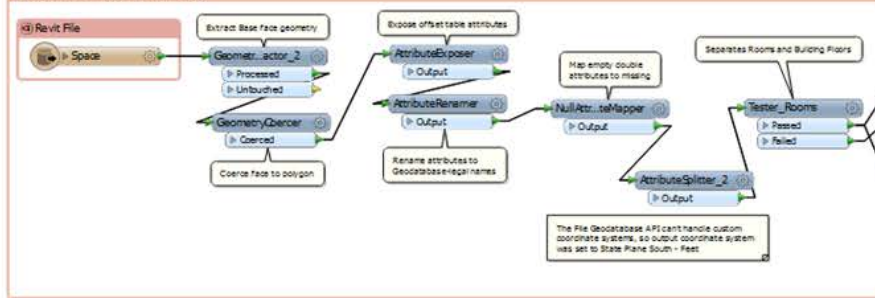


# BIM (Autodesk-Revit) to GIS

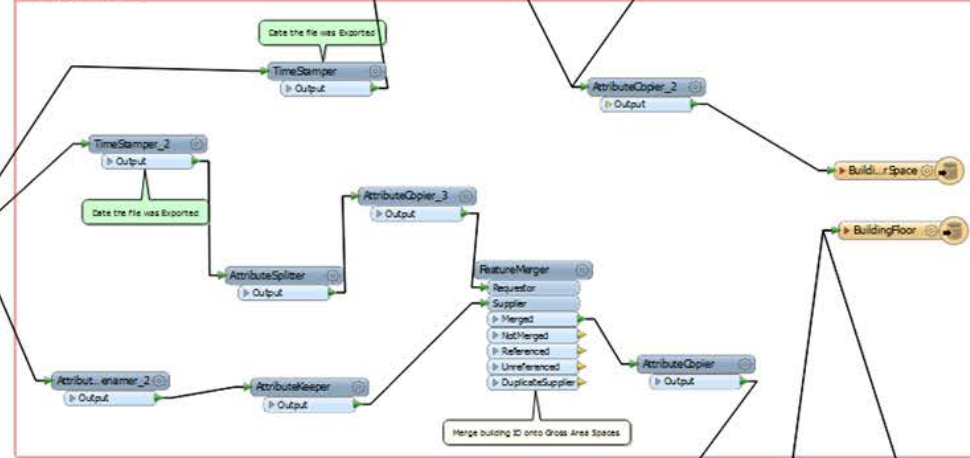




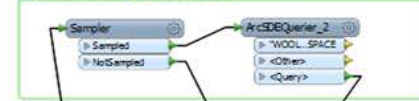
iii) Extracts the 2D geometry from Revit



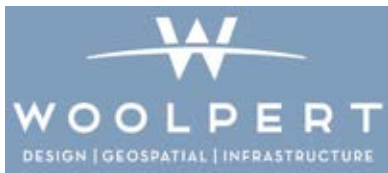
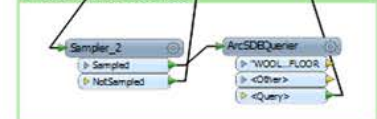
iv) Mapping to LGM - SDE



ii) Delete Old Building Interior space Version



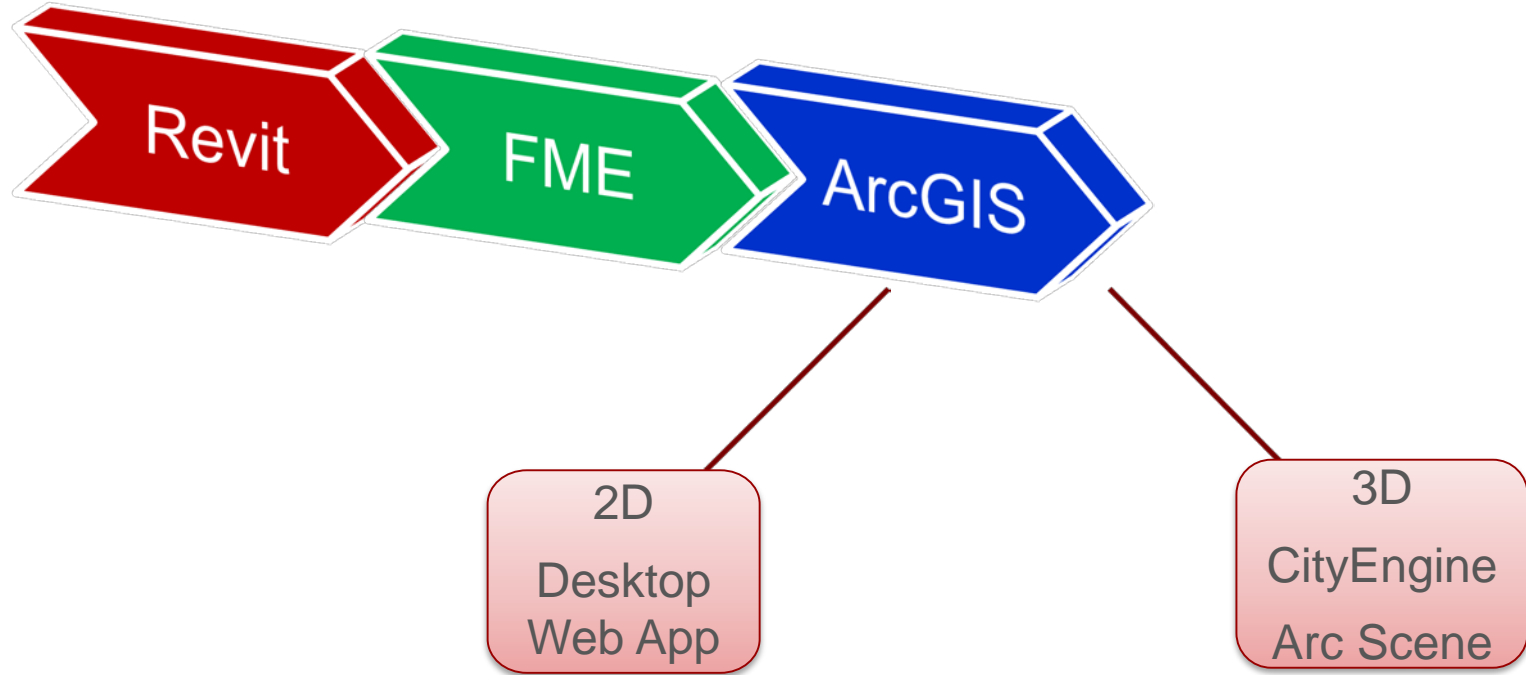
i) Delete Old Building Floor Version

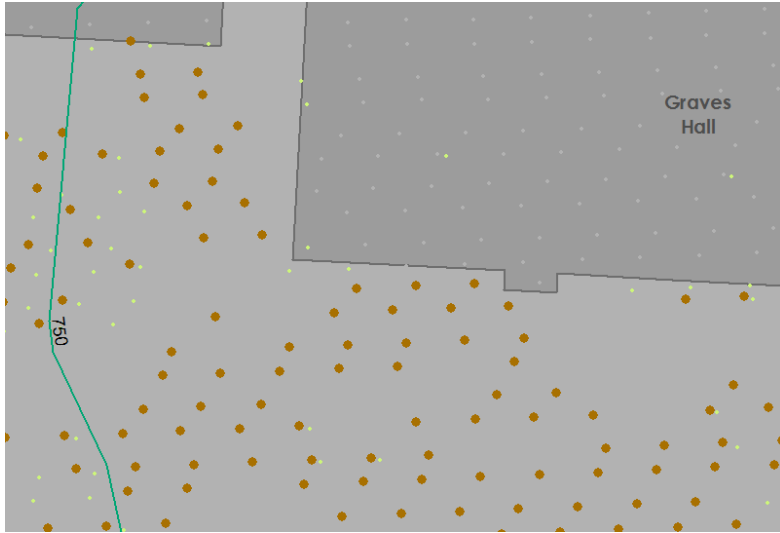






# Data Conversion Workflow





## Enter Coordinates in Revit

## Coordinates and Elevation from ArcMap

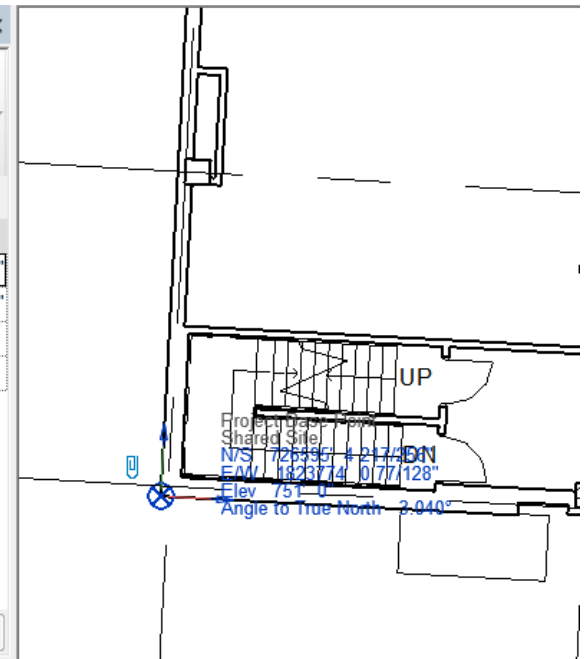
Properties

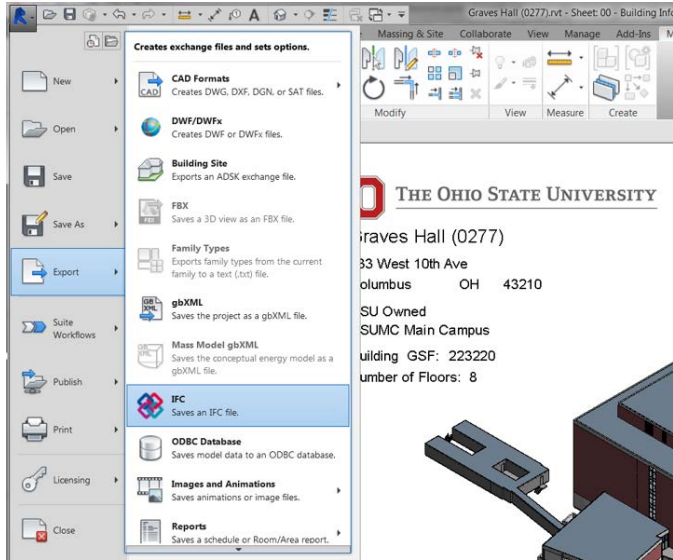
Project Base Point (1) Edit Type

Identity Data

N/S	726595' 4 217/256"
E/W	1823774' 0 77/128"
Elev	751' 0"
Angle to True No...	3.040°

Properties help Apply

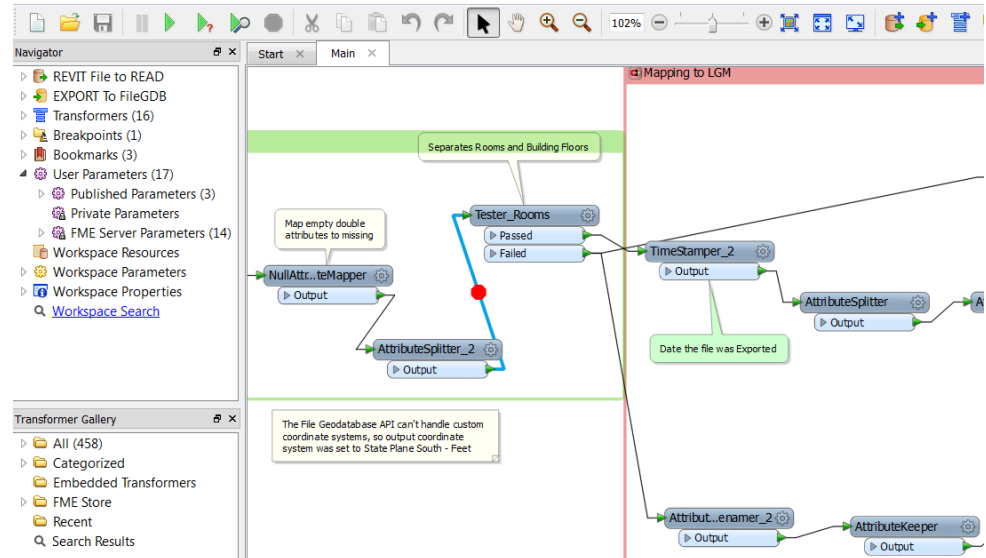




## Export to IFC



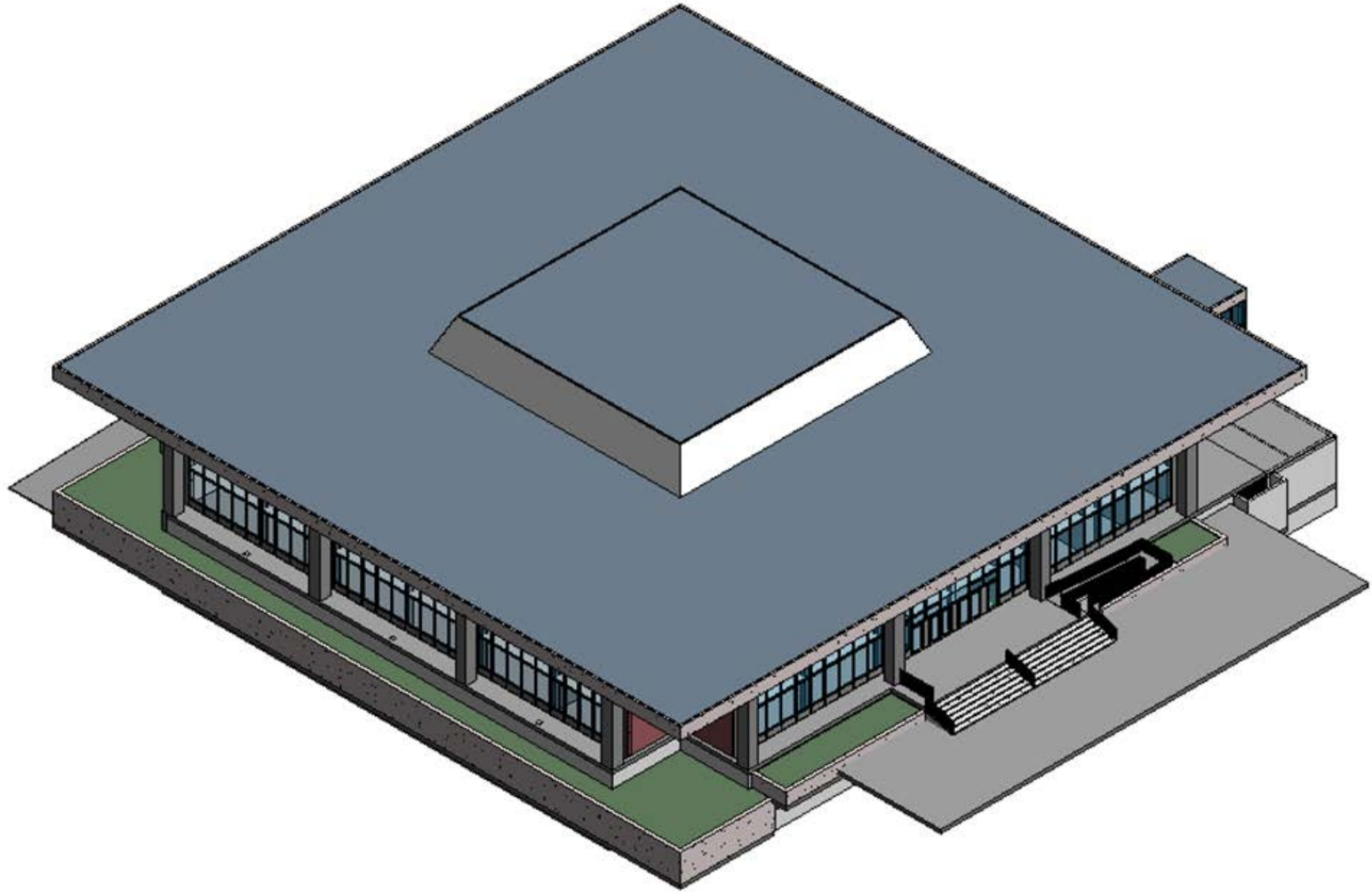
## Run FME Models



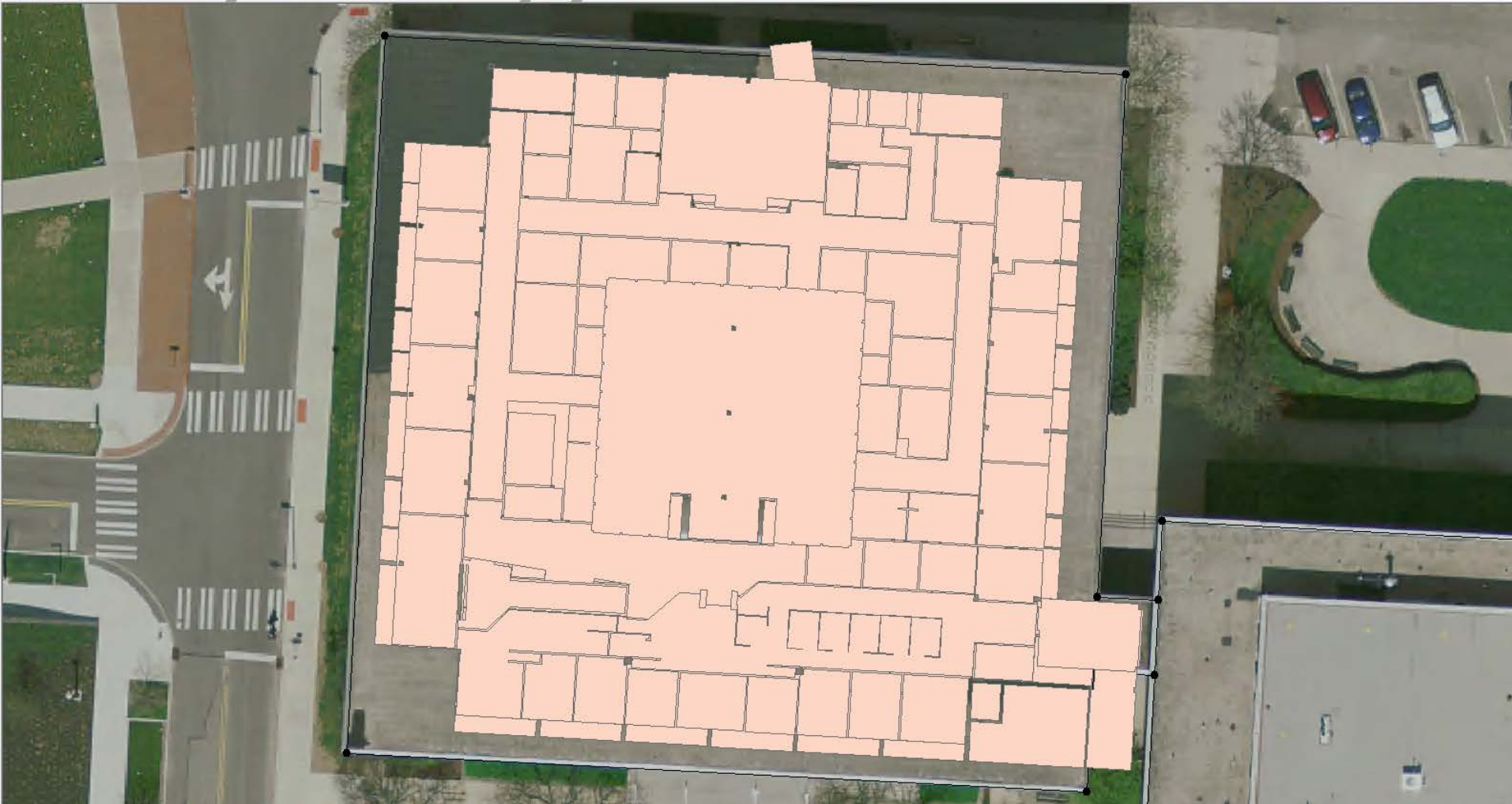


# Challenges- Conversion

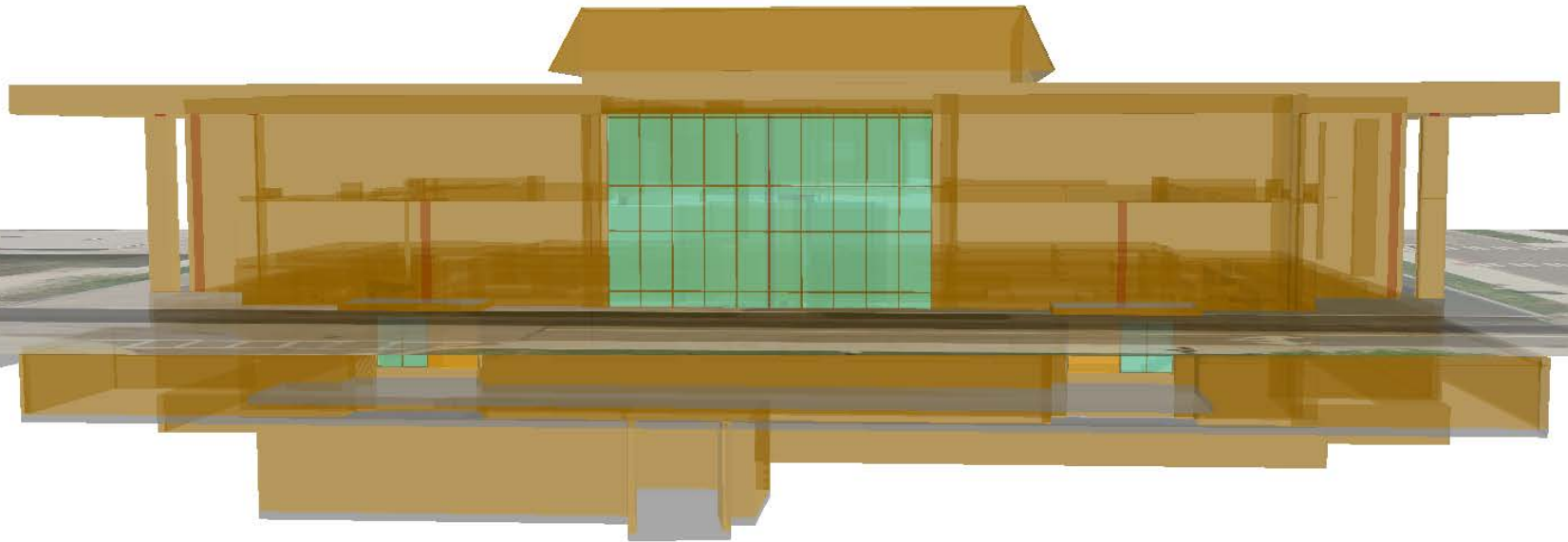
- IFC handling of the columns
- Custom Attributes (Room ID) in Revit
- Coordinate System



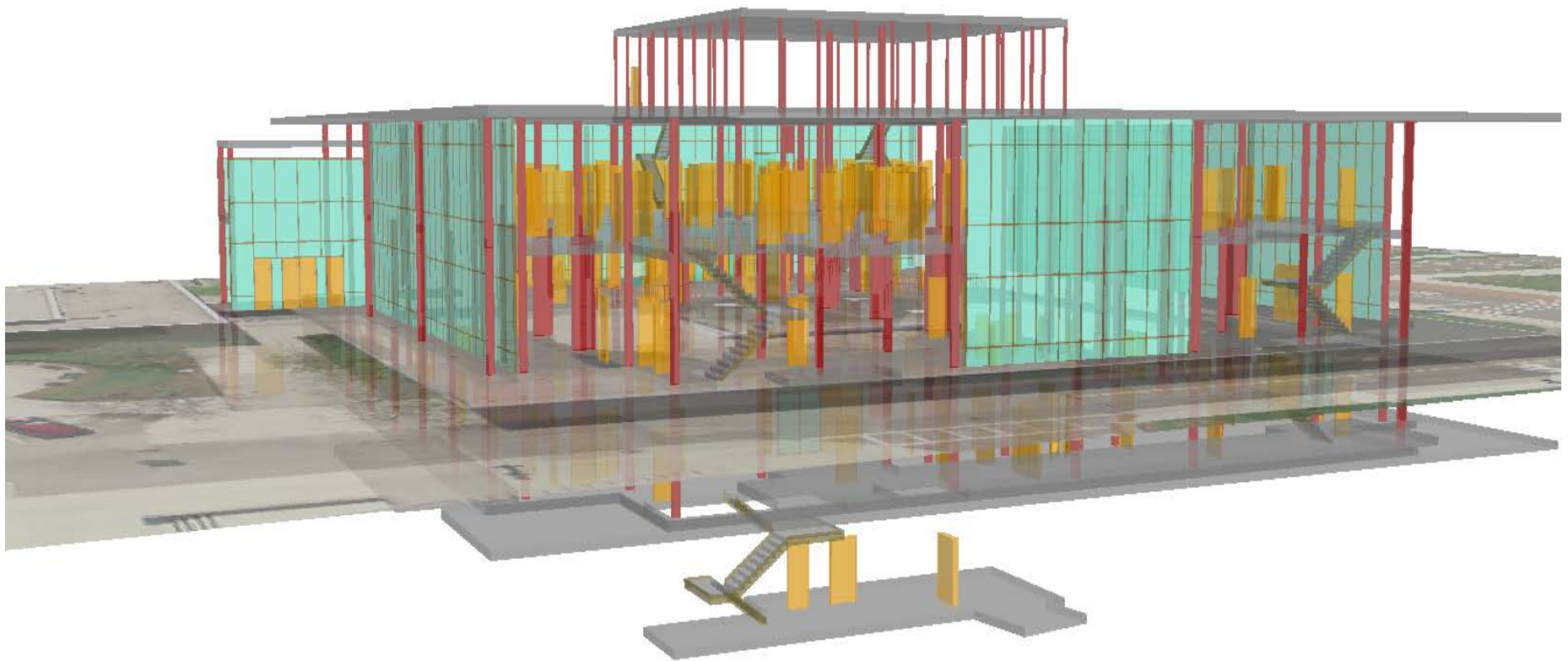
**Revit File**



**2D geodatabase**



**3D Shapefile**



**3D Shapefile**





# ESRI Interior Space Data Model

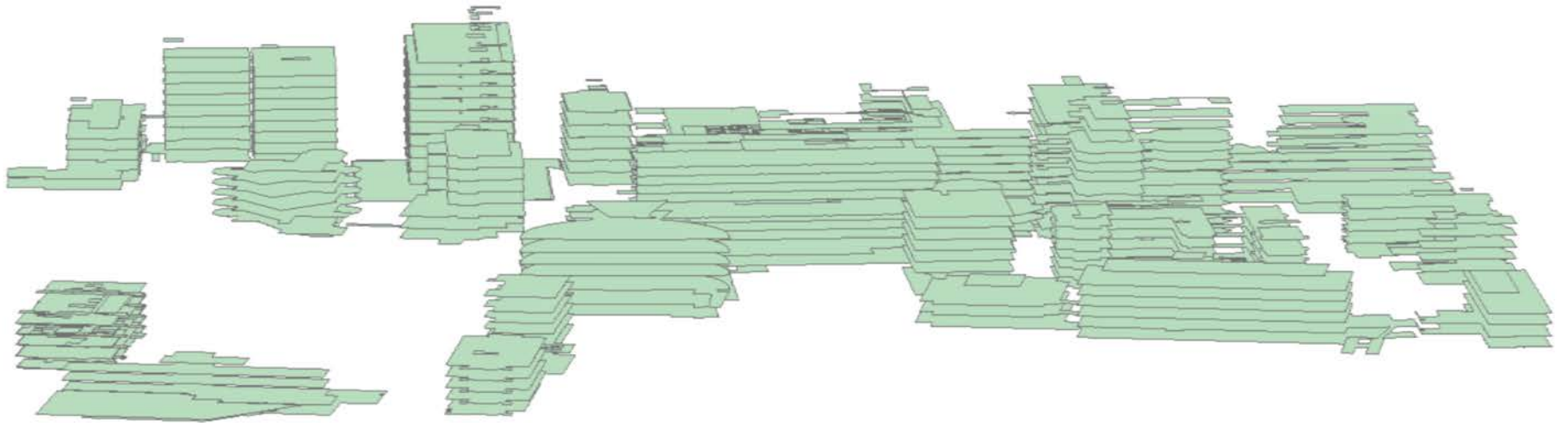
<input checked="" type="checkbox"/> BuildingFloor		BuildingFloor
FLOORID	String	FLOORID
BUILDINGKEY	String	BUILDINGKEY
FLOOR	String	FLOOR
DESCRIP	String	DESCRIP
BASEELEV	Double	BASEELEV
FLOORHEIGHT	Double	FLOORHEIGHT
VERTORDER	Integer	VERTORDER
ACCESSTYPE	String	ACCESSTYPE
LASTUPDATE	Date	LASTUPDATE
LASTEDITOR	String	LASTEDITOR

<input checked="" type="checkbox"/> BuildingInteriorSpace		BuildingInteriorSpace
SPACEID	String	SPACEID
FLOORKEY	String	FLOORKEY
SECTIONKEY	String	SECTIONKEY
BUILDING	String	BUILDING
FLOOR	String	FLOOR
SHORTNAME	String	SHORTNAME
LONGNAME	String	LONGNAME
DESCRIP	String	DESCRIP
SPACETYPE	String	SPACETYPE
ACCESSTYPE	String	ACCESSTYPE
CEILINGHEIGHT	Double	CEILINGHEIGHT
BASEELEV	Double	BASEELEV
FLOORAREA	Double	FLOORAREA
CAPACITY	Integer	CAPACITY
SPACEFORM	String	SPACEFORM
SPACEFUNC	String	SPACEFUNC
SPACEUSE	String	SPACEUSE
LASTUPDATE	Date	LASTUPDATE
LASTEDITOR	String	LASTEDITOR



# Interior Space Data Model

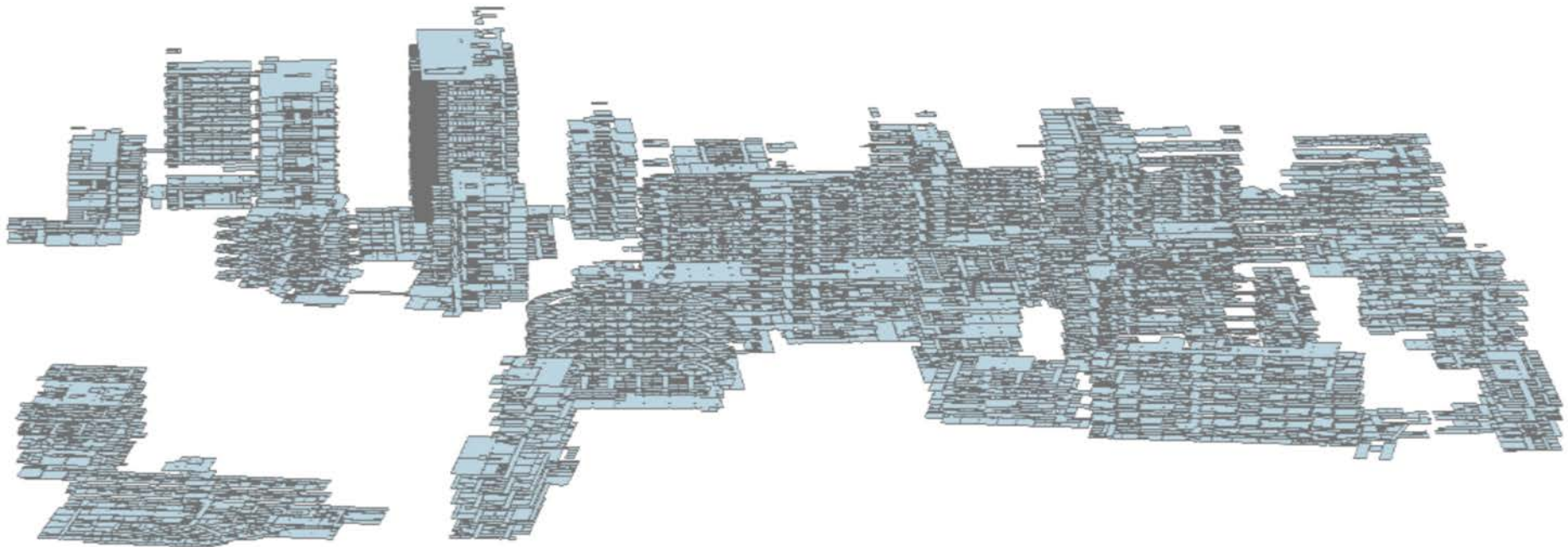
## BuildingFloor





# Interior Space Data Model

## BuildingInteriorSpace





# GIS Maps



## GIS Maps Application

GISMaps is an enterprise GIS web application developed to provide students, staff, and faculty the view into useful information about the campus as a whole.

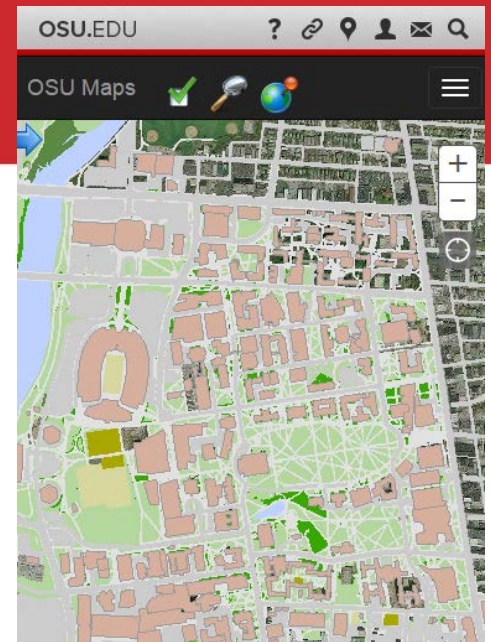
### **Provides basic information:**

- GIS data
- Building information
- Parking locations
- Public transportation
- Directions

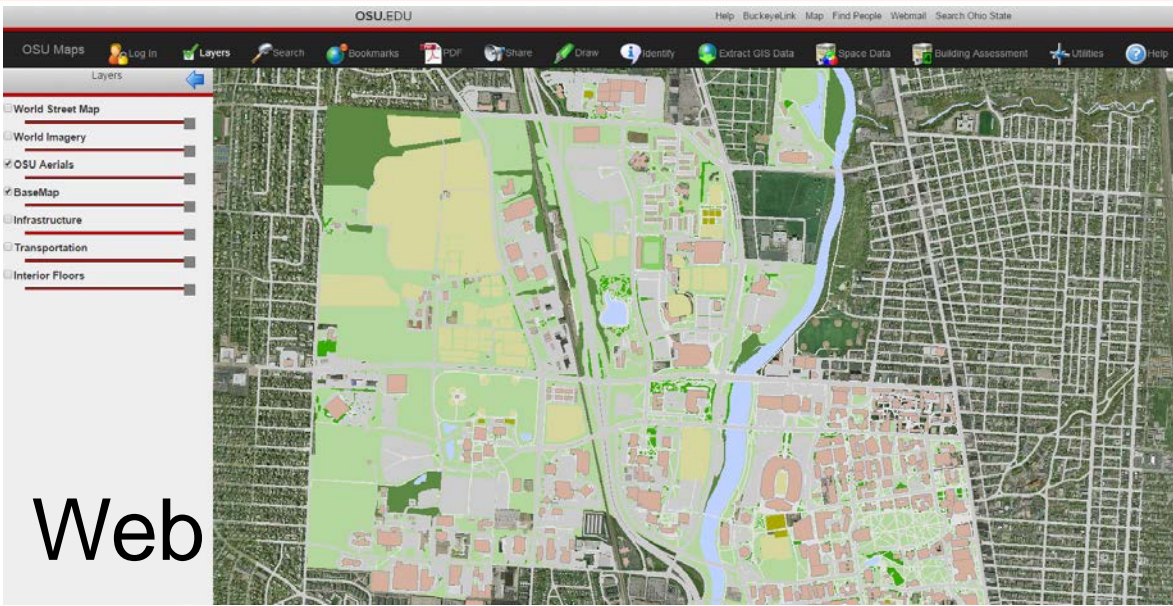
### **Advanced functionality:**

- Display energy usage
- Information about interior space
- Building assessment data
- Utility locations

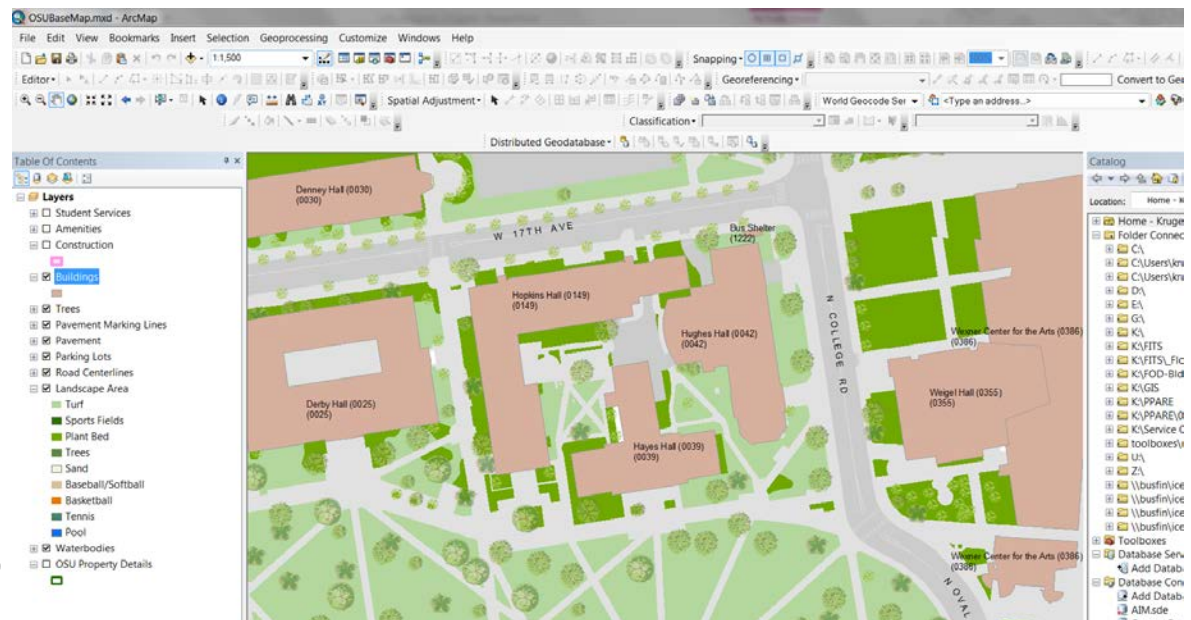
The application uses modern responsive design that makes it accessible on desktops, tablets, and smartphones alike.



Mobile Device



Web



Desktop



## GIS Links to Various Databases

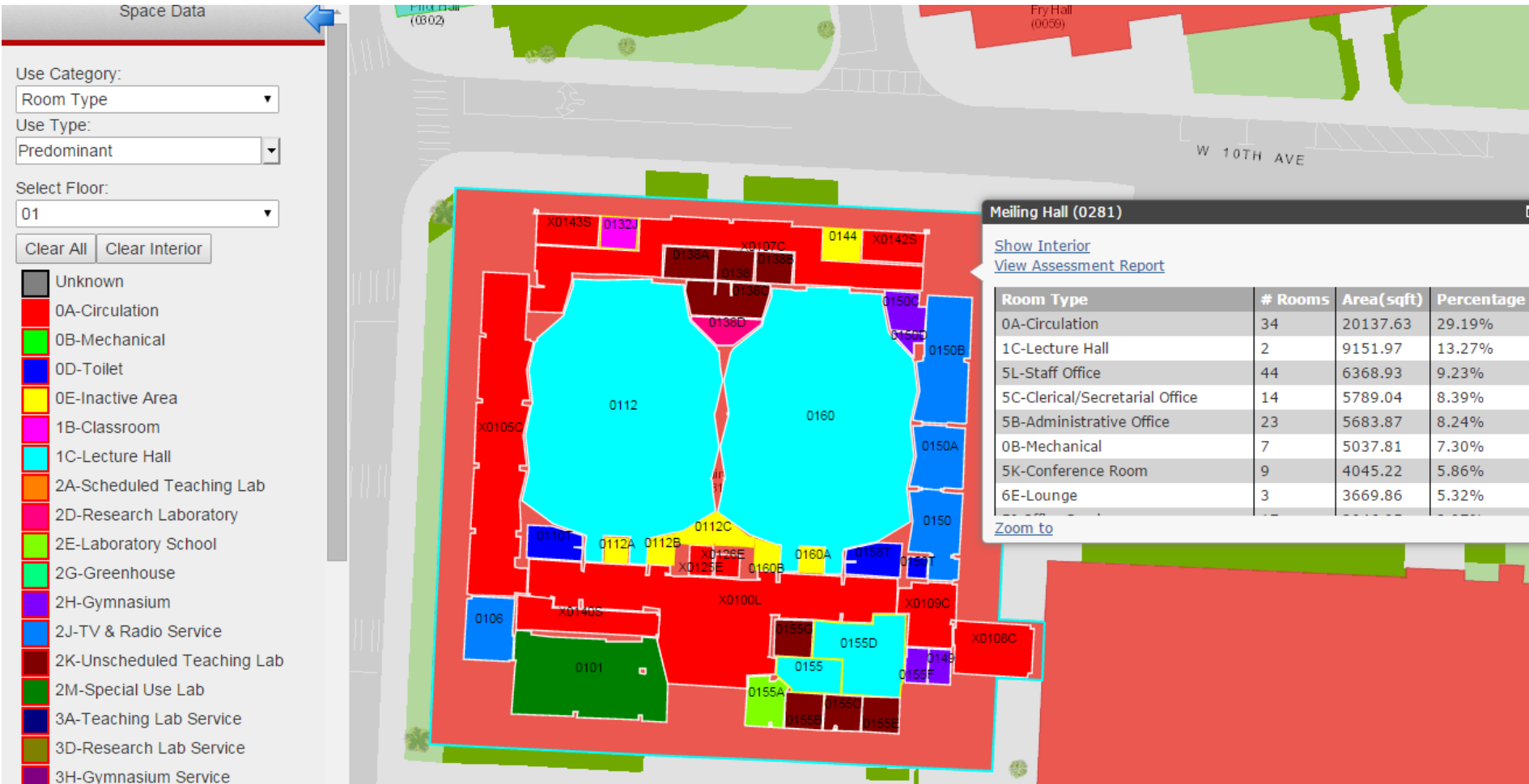
- Display floors around campus
- Find detailed information about a room
  - Organization
  - Department
  - College
  - Room Type
  - Function
  - Sub Room Type
  - Capacity
  - Room Number/Space ID
- Display building assessments
  - Interior Finishes
  - Exterior
  - Life Safety
  - Accessibility
  - Plumbing
  - HVAC
  - Electrical





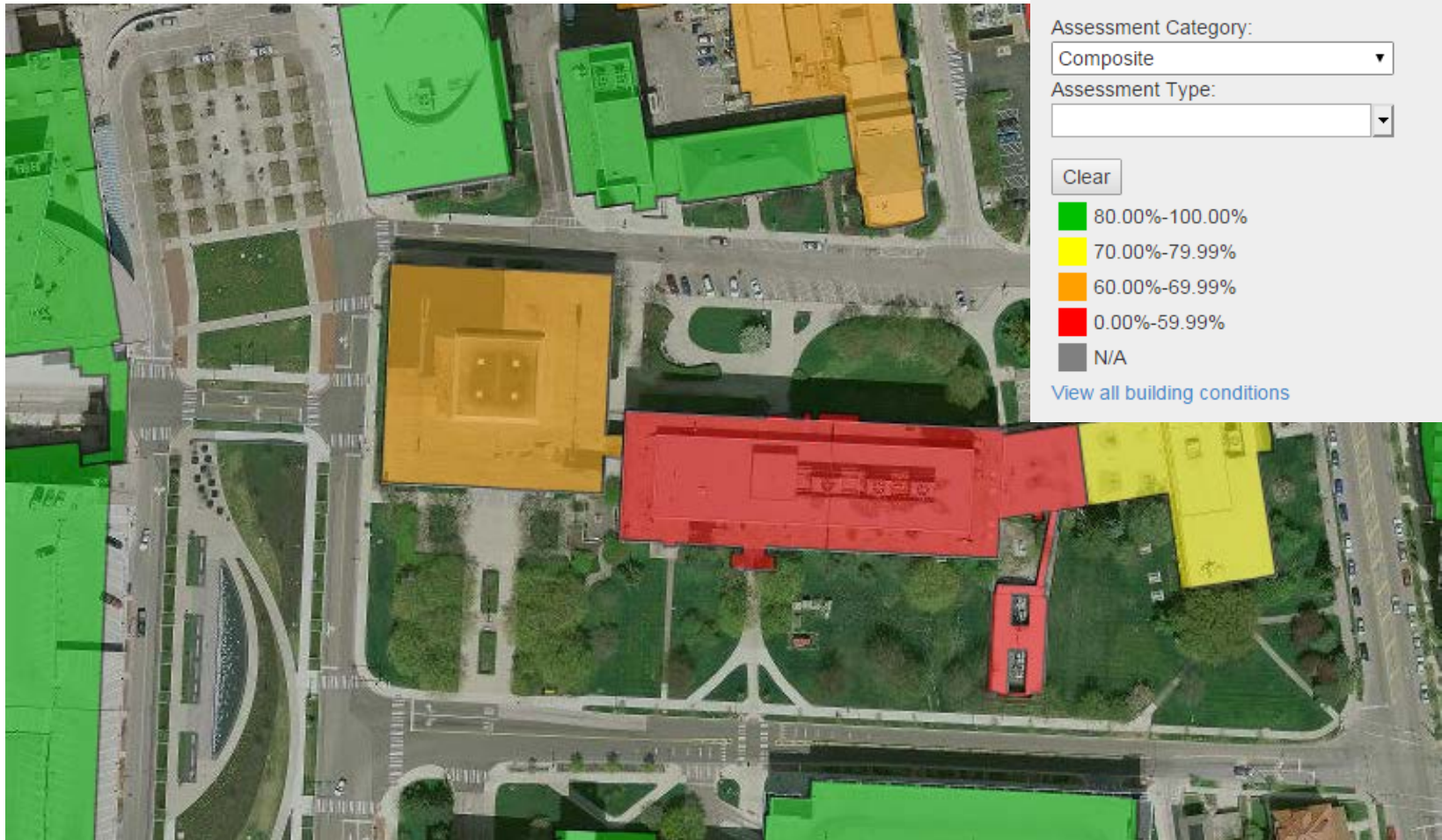


# Categorization and Query of Space Utilization





# Buildings Link to Building Assessment Database





**ESRI City Engine**



# Demo



THE OHIO STATE UNIVERSITY



Questions?

CLASS OF 2011  
ΑΧΩ