

University of Michigan
Founded: 1817

Ann Arbor Campus
Number of Buildings: ~750
Campus Size: ~3200 acres
Gross Sq Ft: ~40M



Ray Garrett

Senior Manager

Utilities Records Integration (URI) Department

With UM since 2006

6 FTEs in URI, 2 shared support



UNIVERSITY OF MICHIGAN

Utilities Department

Power Plant
Medium Voltage
Low Voltage
Water
Sanitary
Storm
Chilled Water
Tunnels
Steam
Condensate
Compressed Air
DWS & DWR

Other Departments

Fiber

Fire Service

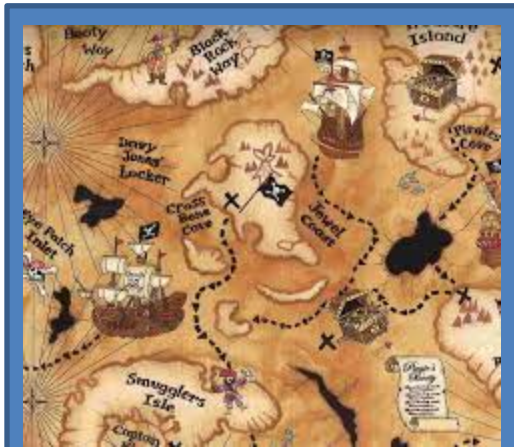


**300+ miles of
underground services**



UNIVERSITY OF MICHIGAN

Utilities Records Integration (URI)



Mapping



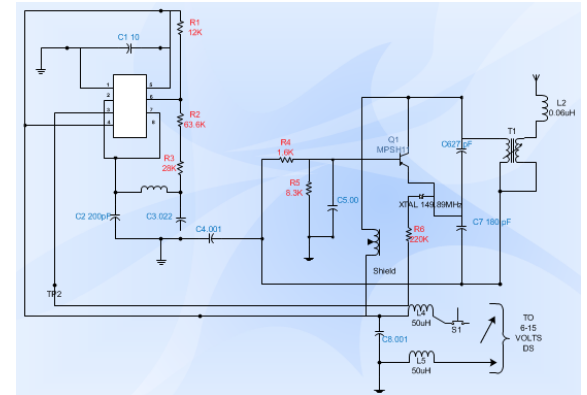
Miss Dig Administration



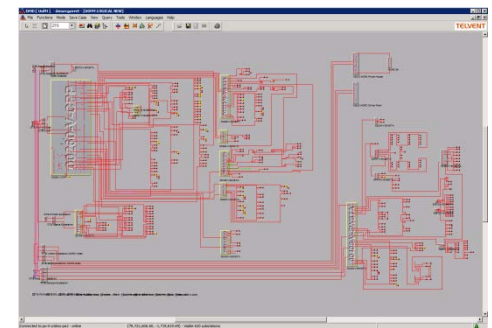
FMS



Web



Electrical Documentation



Distribution Management System

How do you start a Utility GIS System?

Determine the benefits
Management's Commitment
Authoritative Data Source
Implementation Plan
Involve the trades!
Maintenance Plan
Involve the trades!



UNIVERSITY OF MICHIGAN

Benefits

Single source of truth – Authoritative data source
Reduction in documentation costs by elimination of duplicate systems

Data Federation

Consolidation of institutional knowledge

Better Panning

Lower Miss Dig costs

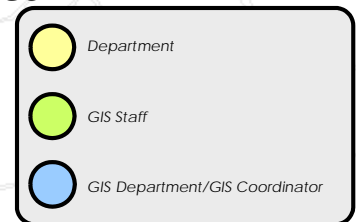
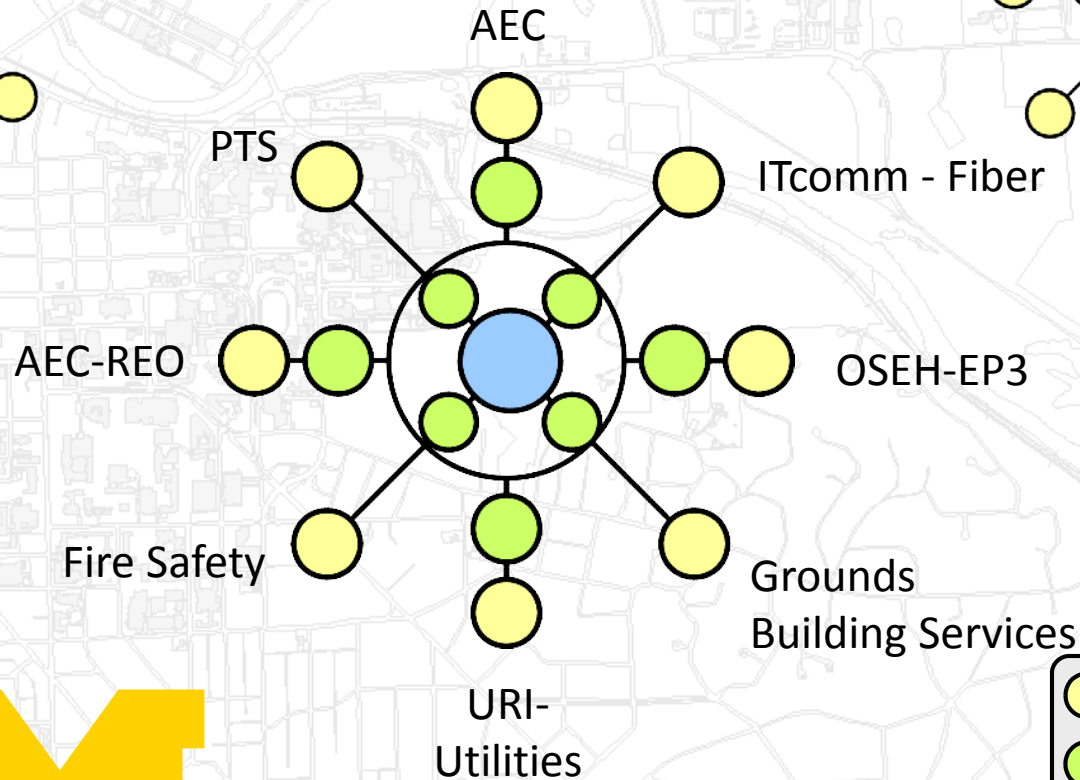
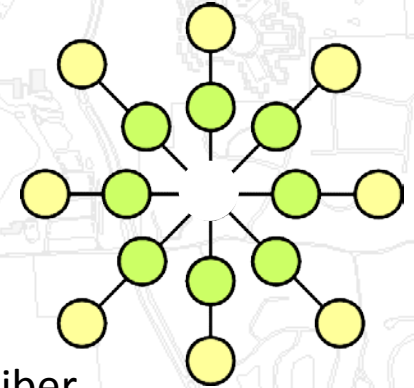
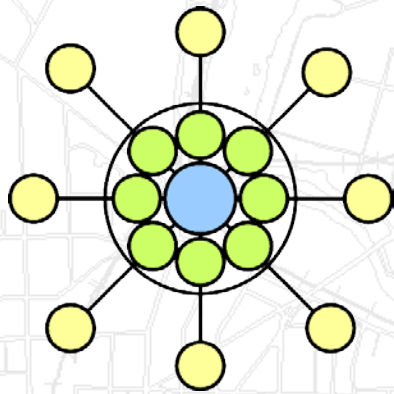
Fewer Miss Dig hits

Consistent & wider distribution of knowledge



UNIVERSITY OF MICHIGAN

GIS Organizational Structure



Implementation Plan

GIS Standards Committee

Talk with the Shops and Trades

Jumpstart with Total Station locations of
Water/Sanitary/Storm

Transfer Electrical from CAD

Involve the Trades for data correction

80/20 rule



UNIVERSITY OF MICHIGAN

Implementation Plan

GIS Standards Committee

Resolved duplication of efforts

Security Coordination

Data Federation

Data interchange guidelines

Established Spatial Reference

Meta data guidelines

Resolution of differences

Exchange of ideas



UNIVERSITY OF MICHIGAN

Implementation Plan

Talk with the Shops and Trades

Find out what would truly save the trades time and money
Solicit their help in correcting the data
Assure them that we are not going to take any paper away
Borrow and return redlines stashed in trucks and shop
Meet with them regularly

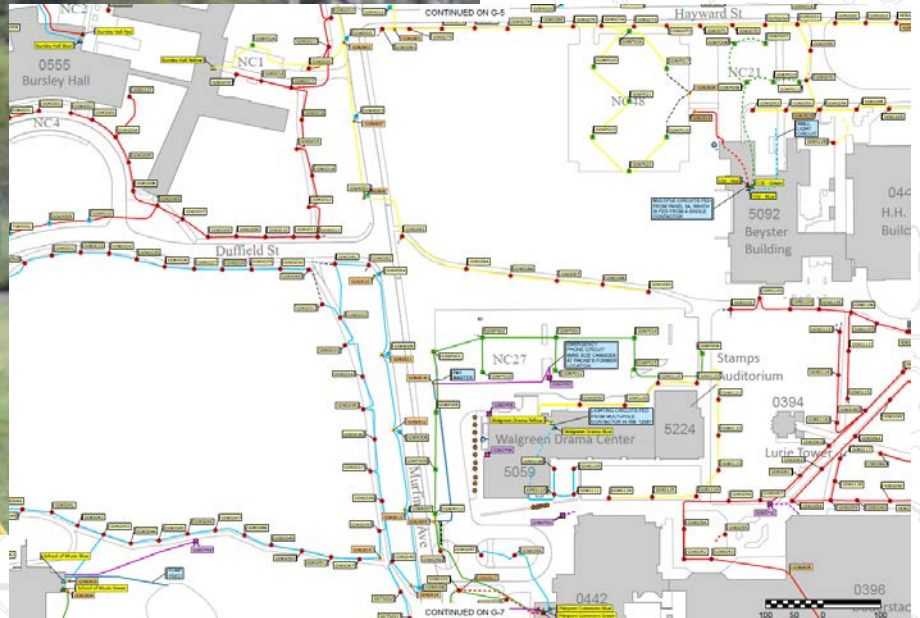
**Only promise what you can do
and do what you say**

Deliver results that benefit the trades



UNIVERSITY OF MICHIGAN

Implementation Plan



UNIVERSITY OF MICHIGAN

Maintenance Plan

Talk with the Shops and Trades

Routinely solicit feedback on correcting the data

Help them in a timely manner

If you are unable to implement a suggestion or update in a timely manner let them know a realistic time frame

Updates should be timely and routine

Plan for measured growth



UNIVERSITY OF MICHIGAN

How do you get the information to the end user?

Paper – 2%

ArcMap -2%

Web – 98%



UNIVERSITY OF MICHIGAN

URI GIS Website

Responsive Design

Multi-Platform

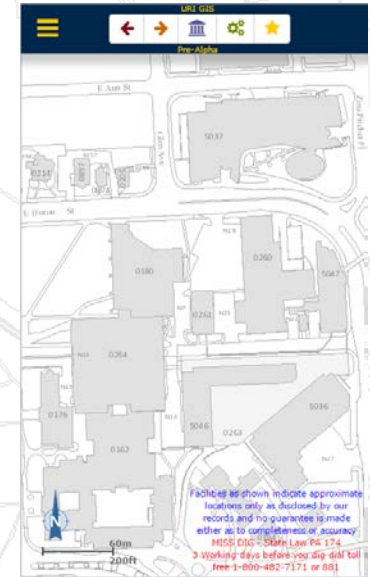
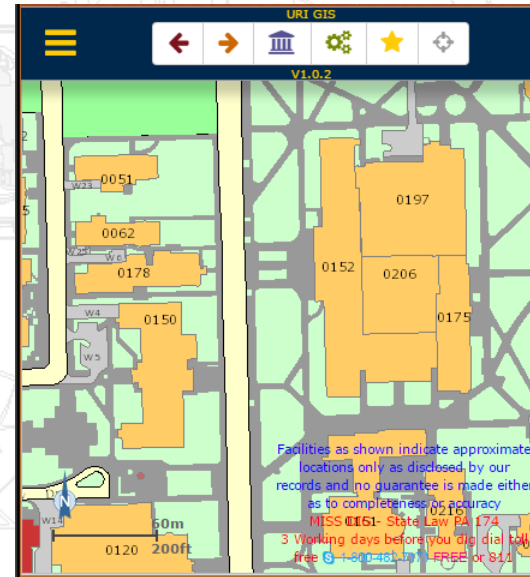
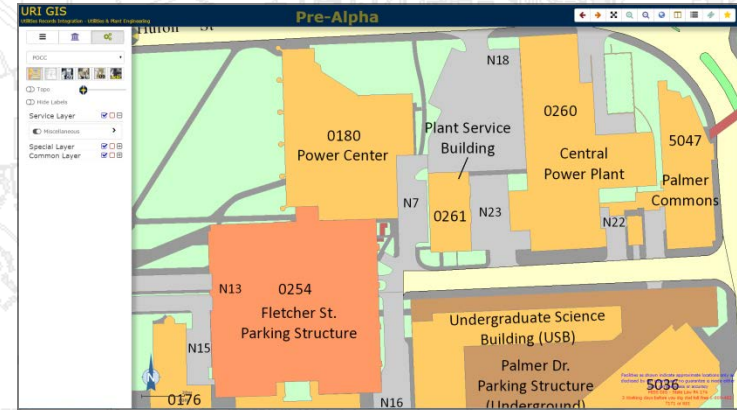
Desktop/Laptop

Windows, Mac

Mobile

iOS 8+, Android 4.4+

MS Surface



UNIVERSITY OF MICHIGAN

Web Technologies

HTML, CSS, JavaScript

ESRI ArcGIS API for JavaScript, Dojo Toolkit

Backbone.js, Marionette.js, Underscore.js

Bootstrap, JQuery

ESRI ArcGIS for Server

ASP.NET WebAPI



UNIVERSITY OF MICHIGAN

A light gray background map showing a city grid with various streets and building footprints.

Website Demonstration



UNIVERSITY OF MICHIGAN

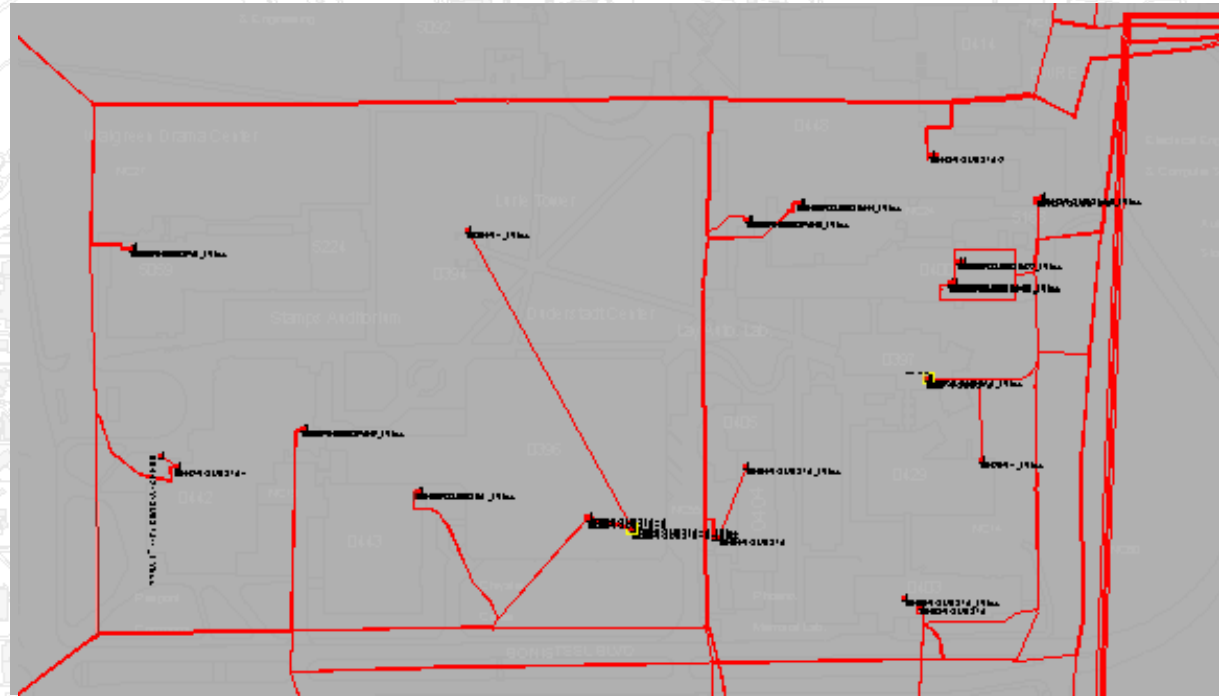
Other areas we are working on



UNIVERSITY OF MICHIGAN

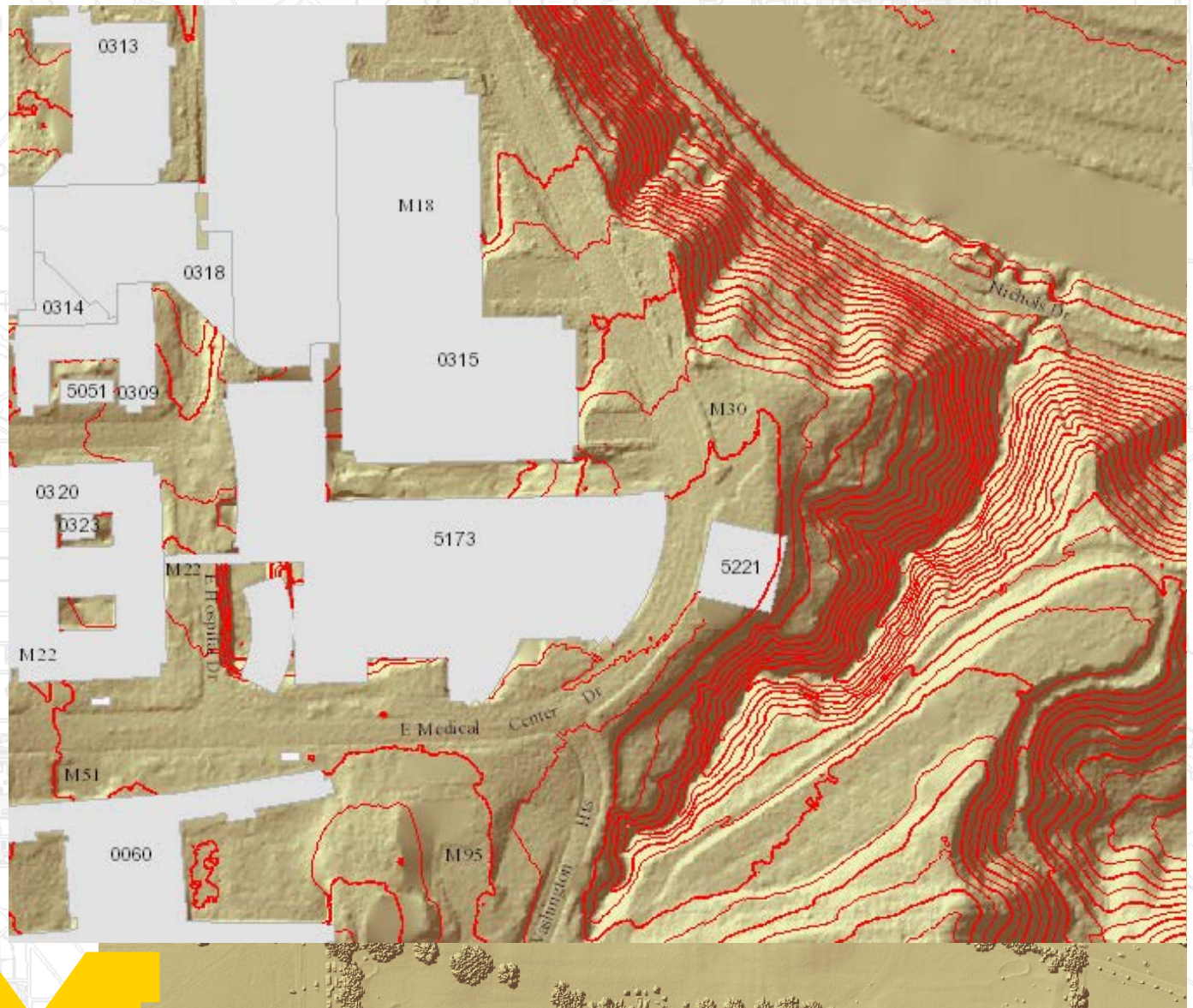
GIS to DMS

ArcFM
ArcMap



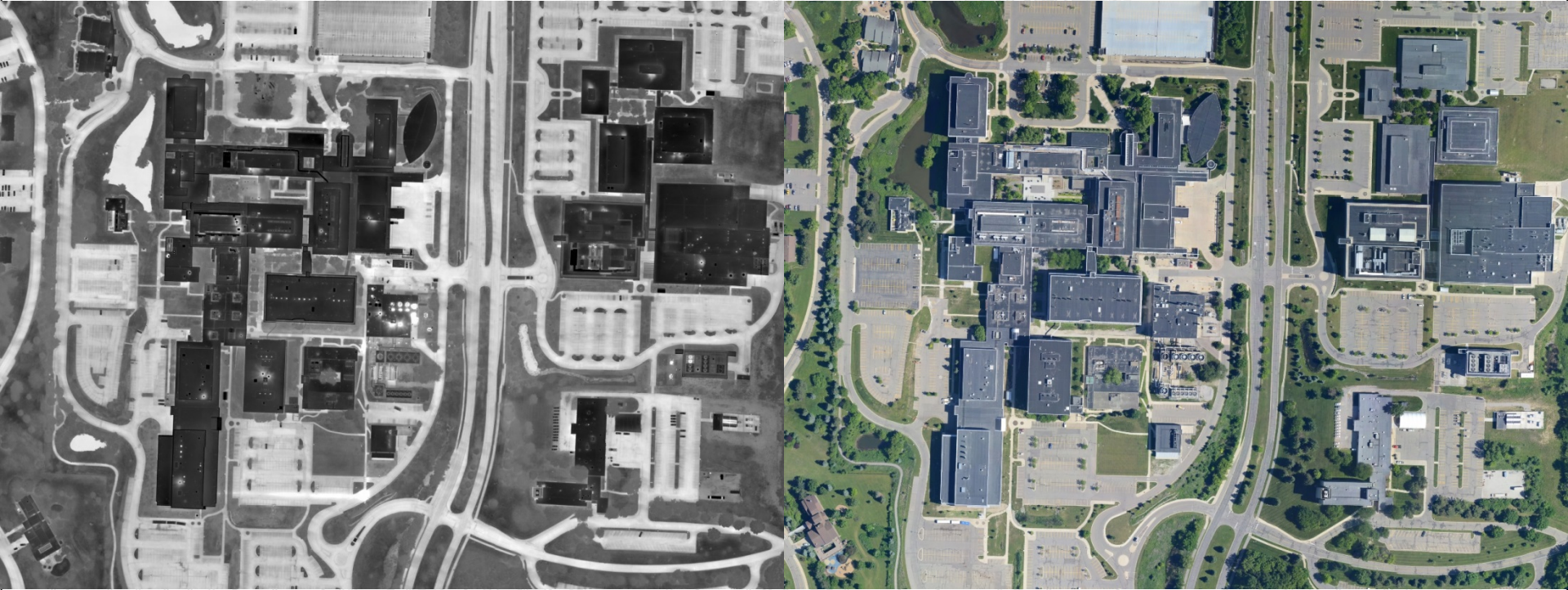
UNIVERSITY OF MICHIGAN

DSM



UNIVERSITY OF MICHIGAN

IR



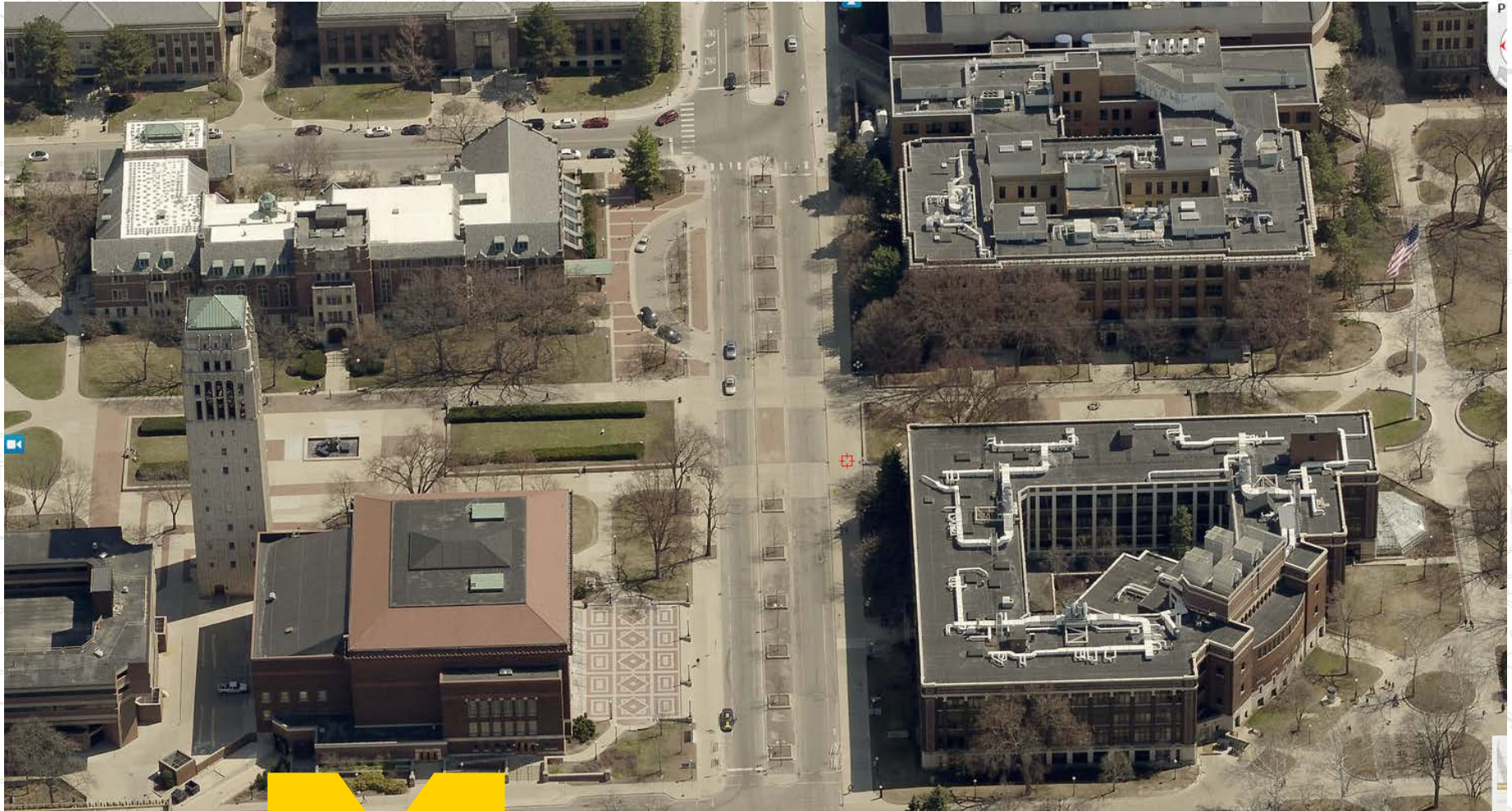
UNIVERSITY OF MICHIGAN

IR



UNIVERSITY OF MICHIGAN

High Quality Aerials



UNIVERSITY OF MICHIGAN

CityEngine Campus

Why 3D?

To accurately represent:

Buried Utilities

Tunnels

Building Light Locations

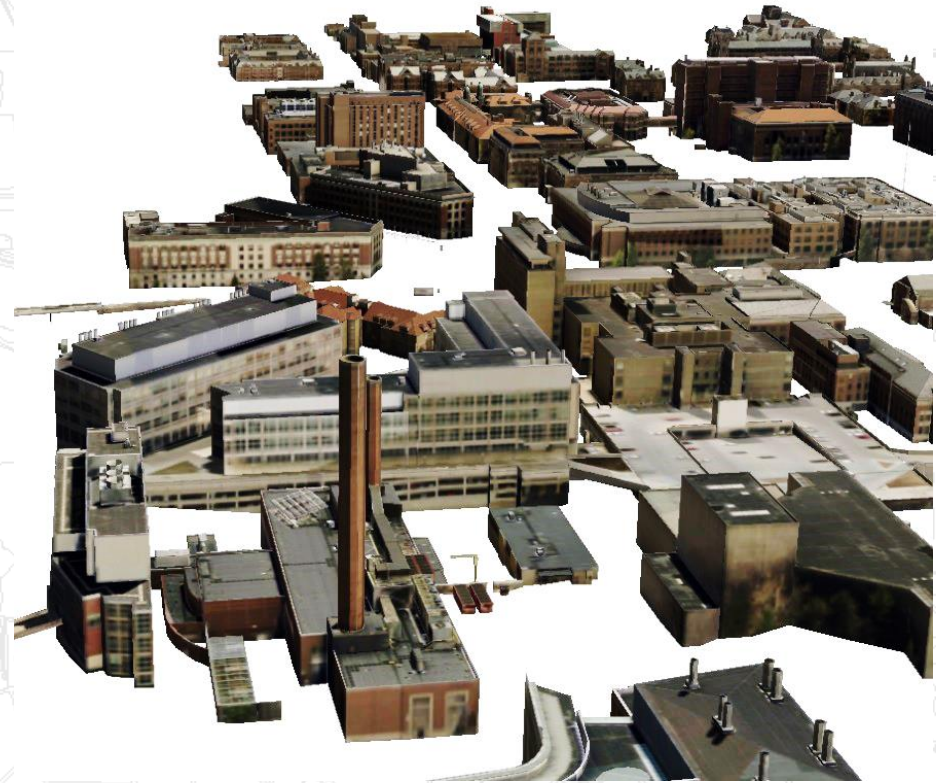
Help with Miss Dig

Help with project planning

Reduce Engineering Costs

BIM Integration

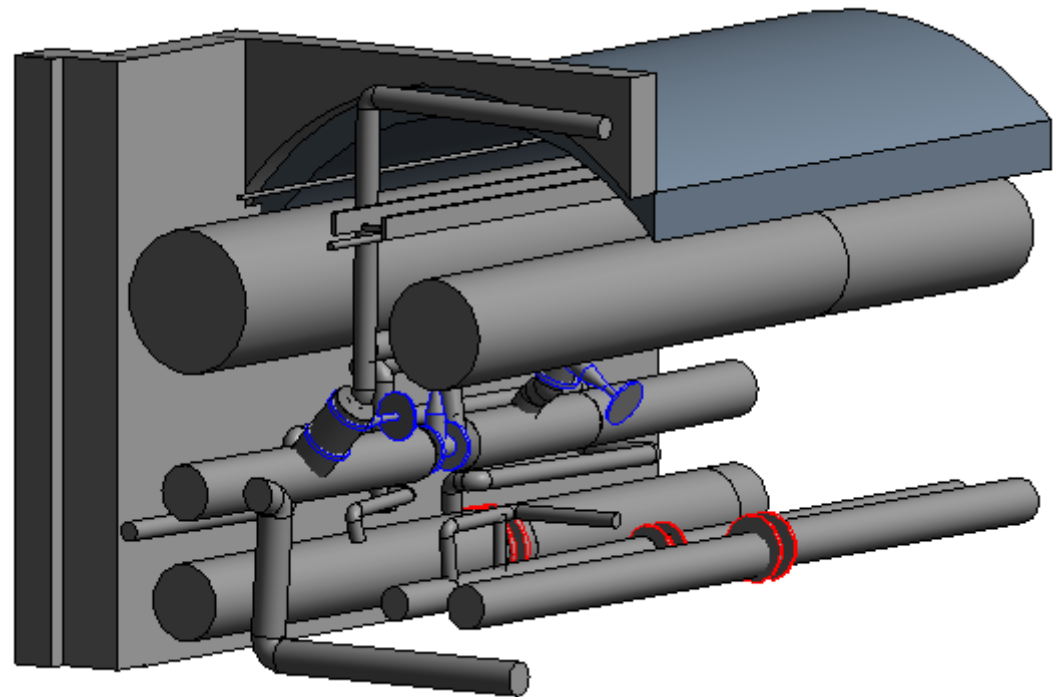
Join us Friday August 14, 2015 9:45am at the CFTA annual conference
hosted at Michigan State University, East Lansing, MI



Tunnels

Point cloud to BIM to GIS

**BIM to AiM
(CMMS)**



Join us Thursday August 13, 2015 9:30 am at the CFTA annual conference hosted at Michigan State University, East Lansing, MI

**CFTA 2015 Silver Anniversary
Conference @
Michigan State University
in East Lansing, Michigan
August 11-14**

**Registration @
<http://www.cfta.org/>**



UNIVERSITY OF MICHIGAN

Questions?



UNIVERSITY OF MICHIGAN